

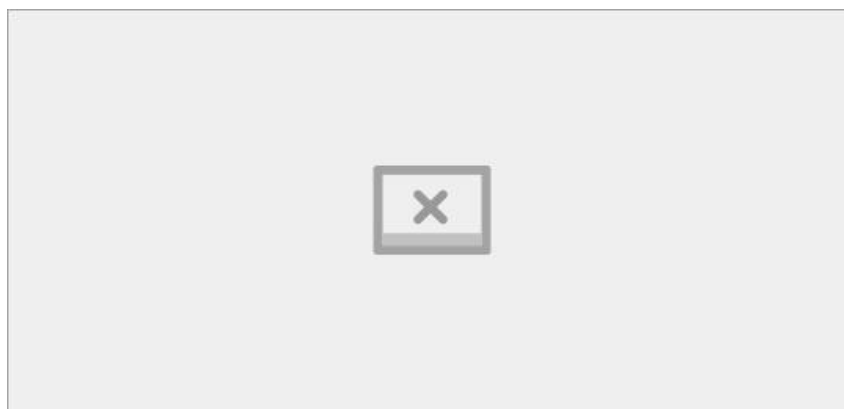


Friends of PEC,

We begin September with some good news: Pennsylvania has taken a major step toward decarbonizing electricity generation with **last week's decision** by the Independent Regulatory Review Commission to advance DEP's proposed rulemaking for joining the Regional Greenhouse Gas Initiative (RGGI) carbon market. Once linked with RGGI, Pennsylvania will realize a projected carbon dioxide emission reduction of 180 million metric tons by 2030, according to DEP.

While the RGGI news is cause for celebration, our ability to do so in person is once again being affected by the pandemic. As we head into our fall **events** season, and as responses to COVID-19 continue to evolve, PEC will be monitoring guidance from the CDC and others in order to have appropriate safety protocols in place at our events. These may vary based on the type of event and other factors and may include masking and social distance requirements, proof of vaccination, and/or other precautions. Please stay tuned as the event(s) approach and we will keep you updated.

Smarter Yards, Cleaner Streams



Funded through a grant provided by the National Fish and Wildlife Foundation, and by the **William Penn Foundation** through the **Delaware River Watershed Initiative**, the **Stream Smart** program targets residential areas with the greatest potential for green stormwater

infrastructure projects and recruits property owners to host them.

In addition to helping out their local watersheds and learning how to better manage their own properties, participants get to upgrade their backyards with elegant landscaping features, beautiful native plants, and the wildlife they attract.

Watch

PEC Blog

Now Is the Time for Sustainable Investment

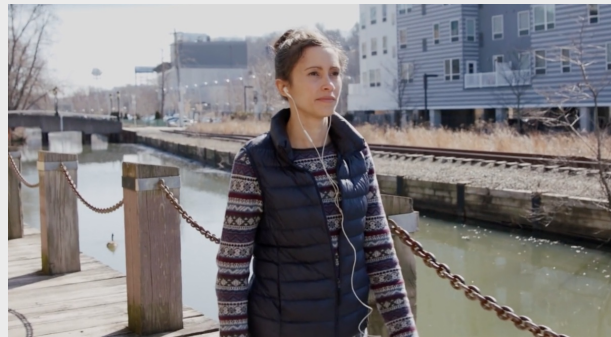


Pennsylvania has an important role to play in the coming years. Securing a sustainable future for Pennsylvanians will require the state to minimize its own contribution to climate change while protecting citizens against future threats, both environmental and economic. That will require action not just to cut emissions, but also to overhaul our energy economy in the best interest of workers and communities.

Read more [here](#).

A Walk in Someone Else's Shoes

In a guest blog, Adrienne Mackey of **Swim Pony Performing Arts** discusses the inspiration for **TrailOff**, an app that creates an immersive storytelling experience along 10 Circuit Trails. TrailOff features original audio dramas written by Philly-area authors who are connected to historically underserved and underrepresented communities.



Read her blog [here](#).

Where would you like the Liberty Bell Trail to take you?



Eight municipalities in Montgomery County are collaborating with the Pennsylvania Environmental Council and partners to advance the planning of the Liberty Bell Trail (LBT).

Stay up to date and get involved with the Montgomery County Liberty Bell Trail feasibility study [here](#).

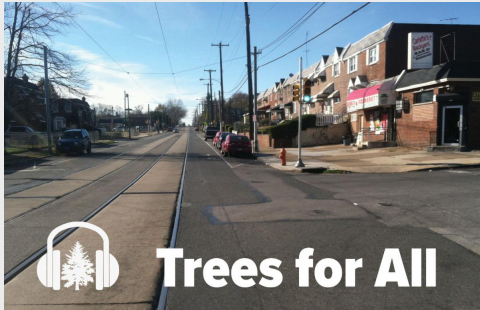
Ups & Downs in Michaux State Forest

The South Mountain (aka “Southy”) region of Michaux below Rt. 30 is a lesser-known section of the popular state forest but not for lack of goods. Don’t let the lower mileage of this route compared with other Public Lands Ride routes fool you — part of the ride that isn’t climbing or descending (over 5,000 feet worth over 45 miles), and a couple rugged sections of trail add a bit of flavor.



There are two ways to participate in the 2021 Public Lands Ride. Learn more [here](#).

Pennsylvania Legacies



Trees for All

With few exceptions, the more tree cover a neighborhood has, the more likely it is to be wealthy and predominantly white. Tree Equity Score, a new tool by American Forests, helps quantify this disparity. Ian Leahy, VP of Urban Forestry at American Forests, walks us through the process of developing Tree Equity Score, and how it can be used to promote healthier, greener, more equitable cities.

[Listen](#)



Protecting Our Plants

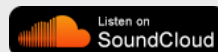
As the climate changes, new challenges will arise for the Pennsylvania Department of Conservation and Natural Resources, the agency in charge of managing and protecting Pennsylvania’s rare plants and their habitats. On this episode, DCNR botanist Andrew Rohrbaugh discusses what the future may hold for Pennsylvania’s most vulnerable flora.

[Listen](#)



The Pennsylvania Legacies podcast features conversations with community leaders, experts, thinkers, and citizens on the most important environmental and conservation issues facing Pennsylvania.

New episodes are posted every other Friday at pecpa.org/audio and are available on most podcast platforms.



SUBSCRIBE

2021 Environment Ride

3-day ride registration is now closed, but you can still join us for 1 day of the **Environment Ride**! 1-day registration is open until September 24th. Register [here](#).

PEC in the News

- **For bikers with some time and an interest in exploring, look at these new long-distance routes through Pa.'s forests** | August 11, 2021 | **Penn Live**
 - **Funding to plug and remediate orphan wells moves forward in the Senate**
August 5, 2021 | **EDF Blog**
-



Stay connected

SUBSCRIBE

JOIN PEC



Copyright © 2021. All Rights Reserved.