



IDEA BOOK
THE DERRY STATION HERITAGE PARK & TRAIL LINKAGES
COMMUNITY DESIGN WORKSHOP

DERRY, PENNSYLVANIA • AUGUST 7, 2010



THE DERRY STATION HERITAGE PARK & TRAIL LINKAGES COMMUNITY DESIGN WORKSHOP

CONTENTS

Understanding The Report 3

Introduction 3

 The Charrette Process 4

 Building The Foundations 5

 Embracing the New Market 7

 The Challenge Ahead 7

Derry Station Heritage Park and Trail Linkages:

 The Context 8

 Internal Linkages 9

 Derry Station Heritage Park 10

 Overall Design Concepts 11

 Quiet Area 12

 Central Plaza 14

 Stream Daylighting 17

 Plaza Amenities 18

 Trail Associated Amenities 19

 Derry Station Heritage Park Playground 20

 Natural Drainage/Stormwater Management 21

 Derry Station Heritage Park Minimal Development Scenario 22

Wayfinding 23

Derry Community Park & Trail Head 25

 Community Park Amenities 26

Pedestrian/Bikeway on SR217 Bridge with Train Observation Platform & Access to Derry Station Heritage Park & 1st Street Connection 27

Participant Drawings of Ideas for Derry Station Heritage Park & Derry Community Park 29

Derry Station Heritage Park and Trail Linkages Community Survey Summary 33

The Derry Station Heritage Park and Trail Linkages Community Design Workshop was facilitated by:



The Derry Station Heritage Park and Trail Linkages Community Design Workshop was supported, in part, by an American Recovery and Reinvestment Act of 2009 (ARRA) stimulus grant, and technical assistance from:



National Park Service
Rivers Trails & Conservation Assistance Program (RTCA)

We also would like to thank the following for their financial and in-kind contributions to Derry Station Heritage Park & Trail Linkages Community Design Workshop:



Many groups and individuals helped coordinate and facilitate the Derry Station Heritage Park and Trail Linkages Community Design Workshop. We would like to especially thank:

- | | |
|--|---------------------------------------|
| Susan Bortz, Mayor | Derry Borough Council |
| Peggy Pings, National Park Service | John Turack, Smart Growth Partnership |
| Allen Skopp, Derry Borough Council President | Barry Smith, Derry Borough Council |
| Lori Latta, Borough Secretary / Treasurer | Mitch Raney, DARCEE President |
| Marie McCandless, DARCEE Secretary | Rich Rupert, DARCEE |
| Kim McWherter, DARCEE | Bob Reintgen, DARCEE |
| Tom Tatone, DARCEE | Kris Baker, Keystone State Park |
| Dr. Jim Segedy, FAICP, PA Environmental Council | Jeff Raykes, AICP, Indiana County |
| Lisa Hollingsworth-Segedy, AICP, American Rivers | Lohren Deeg, ASAI, LDD+I |
| and | |
| The Citizens and Businesses of Derry, Pennsylvania | |

UNDERSTANDING THE REPORT

MOTIVATION AND IDEAS

The primary purpose of this report is motivation and ideas: ideas from the citizens, business owners and community leaders; motivation and challenges for the citizens, business owners and community leaders of Derry and the Derry Area as they consider the potentials of the Derry Station Heritage Park.

Any suggestions of change will undoubtedly come with criticisms and doubt. This process does not claim to have found the answer to Derry Station Heritage Park's place in the community, but rather it is a simple compilation of the community's ideas and suggestions that should be vetted, tested, studied, and understood before adopting or discounting. During the workshop, several residents expressed concerns for our 'clean slate' and 'full picture' attitude toward the development of the site. It should be remembered that this charrette focussed on the development of this site only and how the Derry Station Heritage Park and Trail Linkages fits within its context. This is recognized, and while the approach is somewhat simple-minded, the community must be empowered to find its stride, overcome the obstacles and build a positive momentum. Communities should work to better the lives of all of its citizens and not sacrifice the good of the whole for the misgivings of the one.

This is merely a first step toward the future. In the words of Ron Powers:

*If you always do what you always did,
You'll always get what you always got.*

Derry Station Heritage Park and Trail Linkages will need to develop the leadership and motivation to take charge of transforming from today into tomorrow. That leadership can only come from within community itself and we hope that these ideas are just the catalyst needed to ignite that first spark. None of this will be easy, cheap, or a quick fix. The plan laid out will take the support and contribution of nearly every citizen and business in Derry.

INTRODUCTION

The development of the Proposed Derry Station Heritage Park and Trail Linkages is taking a proactive approach to integrating community needs, a catalyst for revitalizing the *heart of the community*, brownfield redevelopment and becoming a hub for anticipated trail development on the Chestnut Ridge. To help facilitate this goal an open community design workshop, a "charrette," was held on Saturday, August 7th, 2010 in the Derry Station Community Room.

The primary focus for the charrette workshop was on the 9.5 acre site adjacent to the Norfolk Southern Railway line, to the west of the Rt 217 bridge. The process focused primarily on enhancing the site and identifying physical and programmatic connections with other assets within and around the community.

Approximately 40 people from the community and several regional, state and national organizations and agencies participated, helping local leaders, residents and businesses visualize what the site could become and the community's vision of how it can integrate the proposed Derry Station Heritage Park and Trail Linkages into the character and economic vitality of the community.

The visualizations presented in this document represent *idea pieces* or concept drawings, intended to paint a picture of the possibilities as suggested by the workshop participants.



Proposed Derry Station Heritage Park Site from the Rt 217 Bridge

THE CHARRETTE PROCESS

The Derry Station Heritage Park and Trail Linkages Community Charrette provided the community with an opportunity to “visualize their vision.” The charrette included an open house with local residents, business and civic leaders, followed by a Community Survey which included a *Character Preference Survey*. The team used aerial photographs and maps of the area as focal points for discussion.

Over the course of the charrette, community residents, business owners, civic leaders and trail enthusiasts talked with charrette team members to identify the issues and possibilities for the park, linking the park to the community, potential trails and other areas while exploring a wide range of possibilities for enhancing the character and economic vitality of the community.

Using markers and base maps, and simply “brainstorming” ideas with charrette team members, the participants outlined important issues, ideas, and recommendations for improvements.

All of this information together with field observations helped the charrette team develop a series of *idea pieces* reflecting many of the concepts offered by the community. These are typically presented as illustrations, photographs, diagrams and maps.

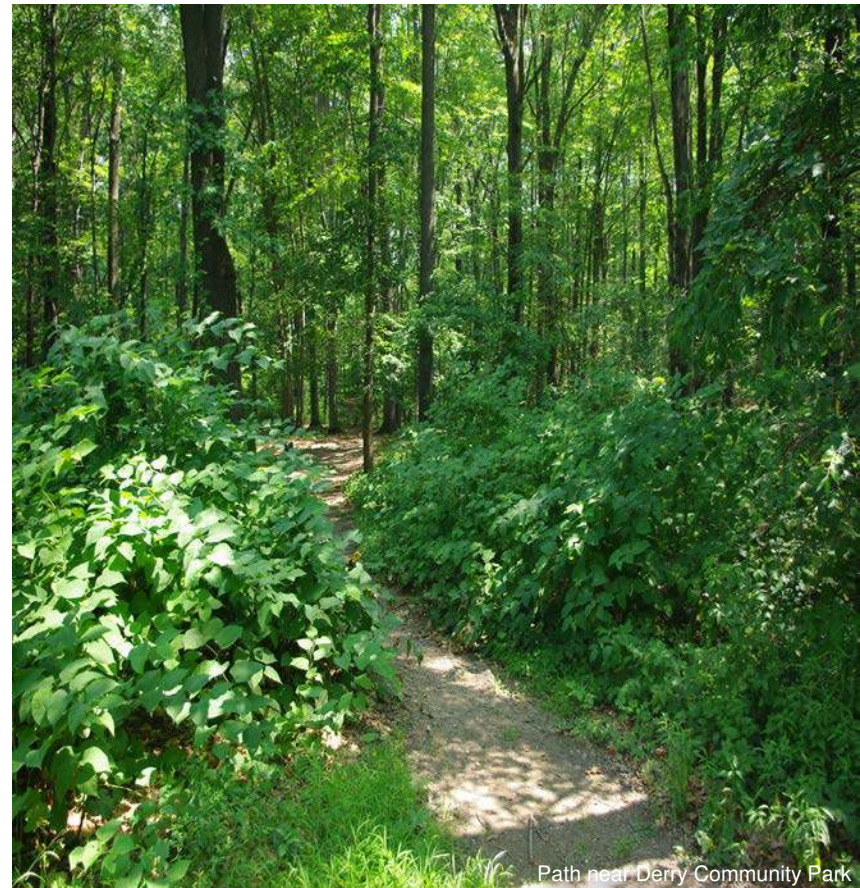
These drawings were the foundation for discussion by the community during a preliminary presentation on Monday, August 16th in the Auditorium at the high school. These *idea pieces* and the feedback received from the surveys and “marked-up” drawings serve as the heart of the recommendations that follow. This charrette report can be used as a ‘road map’ that can be used by community leaders in planning the development of the Derry Station Heritage Park and Trail Linkages as it positions itself as an attractive and vibrant place within the community.

Beyond the basic focus of the charrette, and throughout the course of the charrette, four primary concepts came to the forefront:

- Derry Station Heritage Park and Trail Linkages should be viewed as a *gateway* to the Chestnut Ridge and as a *hub*

for recreation, heritage and tourist activities and tourism support;

- Derry should establish clear linkages between the Derry Station Heritage Park, Trails, Community Park, Downtown and other area destinations;
- While tourism has the potential to be a tremendous catalyst for Derry, the revitalization efforts must first meet the needs of the local residents and businesses.



Path near Derry Community Park

BUILDING THE FOUNDATIONS

The primary purpose of the Derry Station Heritage Park and Trail Linkages Community Design Workshop was to address design-related issues for the development of the park and its place in the community. These issues can not be adequately resolved without an underlying foundation of basic community support and economic vitality.

DERRY STATION HERITAGE PARK AND TRAIL LINKAGES

One of the benefits of developing Derry Station Heritage Park and Trail Linkages and community linkages is centered on enhancing the overall quality of life of Derry and serving as a catalyst for community revitalization. The immediate benefits of supporting the larger community, and especially the downtown, are relatively easy to identify, but the bigger purpose is the community's long-term viability. True community revitalization recognizes the need to create an environment that is also viable and ripe for continued investment. Following the *Main Street Approach*:

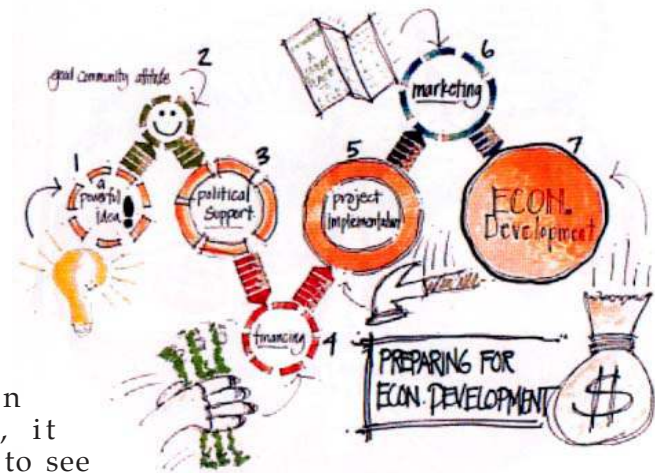
- Organization
- Promotion
- Design
- Economic Restructuring

and the eight Main Street *Principles of Success*:

- Comprehensive
- Incremental
- Self-Help
- Partnerships
- Identifying and capitalizing on existing assets
- Quality
- Change
- Implementation

Our suggestion is to initially apply this logic in establishing a clear linkage between the Downtown and Derry Station Heritage Park, and then to expand the vision to other areas of downtown and the community.

In building the vision for Derry Station Heritage Park and Trail Linkages and how the community will grow and respond to influences such as those suggested in this report, it is important to see beyond the initial burst of growth and toward the longer term development of Derry Station Heritage Park and Trail Linkages as a regional hub and to look for what additional opportunities could arise.



Phase 1 of the *Derry Station Heritage Park and Trail Linkages Community Revitalization Program* is the establishment of a pedestrian based economy in the historic downtown. As a by-product of the 1st phase, we envision Phase 2 as the establishment of secondary investments in larger, historic structures and infill development. This approach would help Derry Station Heritage Park and Trail Linkages become an anchor for an economic niche of tourism support.

Derry Station Heritage Park and Trail Linkages could serve the Laurel Highlands as an unofficial hub for a wide variety of tourist-related activities, and should be expanded in this role. Supportive businesses for this growing tourist-based economy include hotels/ inns/bed and breakfast accommodations, retail: especially arts and craft, outdoor outfitting and restaurants of all types. Further economic expansion should incorporate related corporate offices, travel organizations, and/or housing. In many ways, Ligonier currently serves in this role. It would benefit Derry to work with Ligonier and the Laurel Highlands Visitors Bureau as it becomes a *gateway* to the Chestnut Ridge

DERRY STATION HERITAGE PARK & TRAIL LINKAGES

In developing the tourism hub economic niche, overnight accommodation and food service would be critical components. It isn't necessarily the business type that matters here; rather once an established 'core' of viable businesses begin to establish the Derry Station Heritage Park as a viable activity area, secondary investment is much more likely to take place.

The Derry Station Heritage Park and Trail Linkages Design Workshop primarily focused on the potential development of the specific site and its context, but the benefits of the tourism industry to Derry and the associated business development that could result from tourism support must be considered in partnership. The impacts of this new initiative for Derry and the importance of overall quality of life is important to support the economy of businesses that cater to the citizens of Derry (always the first concern of a successful economic development strategy) and the residents of the nearby communities. These businesses are likely to complement and parallel the customer patterns, and consequently space needs, of those businesses that cater to the tourist.

In Downtown Derry, success could build upon developing and supporting a stable tourism market and the established local businesses through marketing the heritage of the area and range of local amenities. Revitalization of downtown should begin with the renovation and/or adaptive reuse of some of the existing buildings erected during Derry's not-too-distant past. Successful reuse of these structures will require the effective and efficient use of the entire building structure, concentrated redevelopment expenditures, and consistent long-term lease agreements.

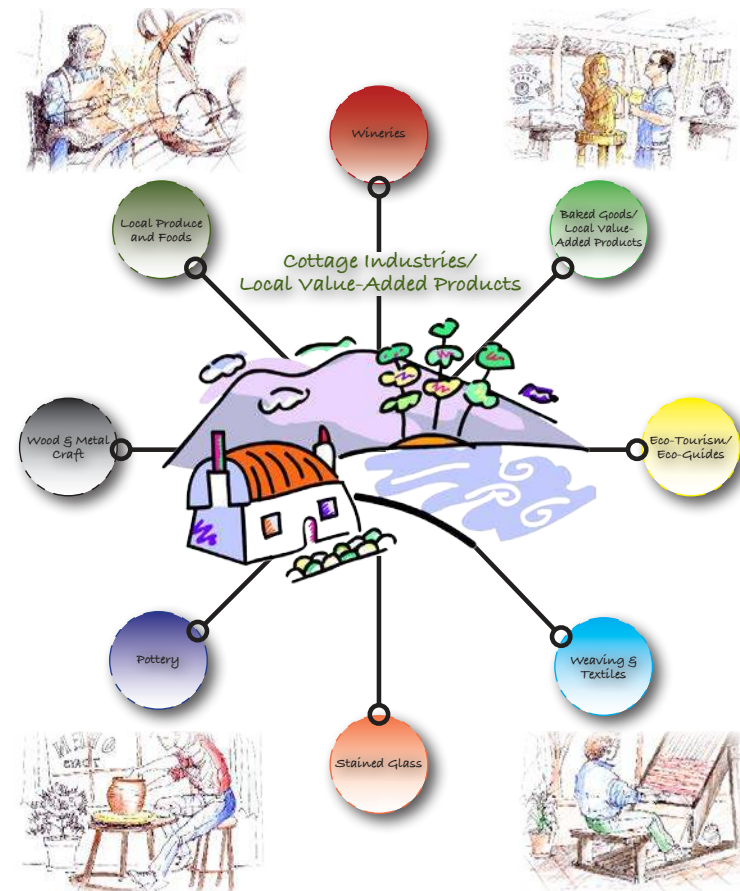
Maintaining the density and occupancy of shops in the *Heart of Derry* is not merely as simple as 're-build it and they will stay.' Maintenance and promotion of this active and supportive environment will require active participation from the civic leadership and the community. Derry must utilize every tool available to ensure that these shops are occupied and prosperous. Some of those tools might include:

- Focussing development and redevelopment in the core,
- Developing and implementing a *Shop Derry First* and/or a

COMMUNITY DESIGN CHARRETTE WORKSHOP

Buy Local program;

- Active marketing of available business space to potential tenants, and
- Seeking out particular support from financing agencies.



Locally produced goods and services as well as local value-added products could be catalysts for diversifying the Derry economy.

EMBRACING THE NEW MARKET

Tourism and tourism support is an obvious new market niche for Derry. The creation of an infrastructure that is conducive to the borough's traditional role and its new role will be an important component of successful community revitalization.

Establish Derry Station Heritage Park as a Regional 'Hub' for Outdoor Activities with links to Downtown Derry

Derry should begin to market itself as the central hub from which tourists could trek the Chestnut Ridge. The local economy would benefit from lodging, retail, food service and outfitting that are necessary to support these trips.

In addition to establishing Downtown Derry as a tourism support hub and destination, there are opportunities for supporting local agricultural products and artisans. Programs associated with the Progress Fund and PASA (Pennsylvania Association for Sustainable Agriculture) bring local and area farmers and value-added products. These local businesses could provide further retail opportunities in downtown or could be highlighted on a map for bicyclists or motorists.

The development of a commercial kitchen and associated marketing and "But Local" programs could expand and diversify the economic base of the Derry Area and provide a more diverse shopping experience for locals and visitors. Incubation and/or a shared studio/gallery space for local and/or area artisans would also help in this economic diversification process.

An anchor for this local economic catalyst could include a Farmers' / Artisans' Market and a storefront retail cooperative for local artisans, such as the Derry Station Art Center, and local value-added products. The Farmer's Market could be an integral part of the Derry Station Heritage Park and Trail Linkages.

THE CHALLENGE AHEAD

This report should be considered as a mere snapshot of the conditions we found in Derry and should not be construed as the only opportunity or direction for this community. The ideas presented here are just that, ideas of what the participants see as a potential future of their community.

Use these ideas as a starting point, setting priorities and building positive momentum with the community, one step at a time.

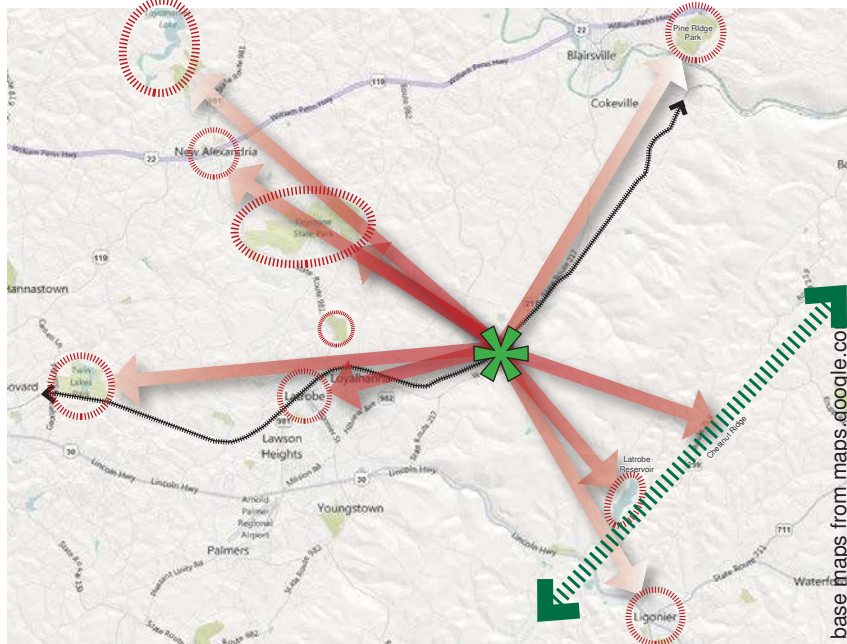


The Charrette in Progress...

DERRY STATION HERITAGE PARK & TRAIL LINKAGES: THE CONTEXT

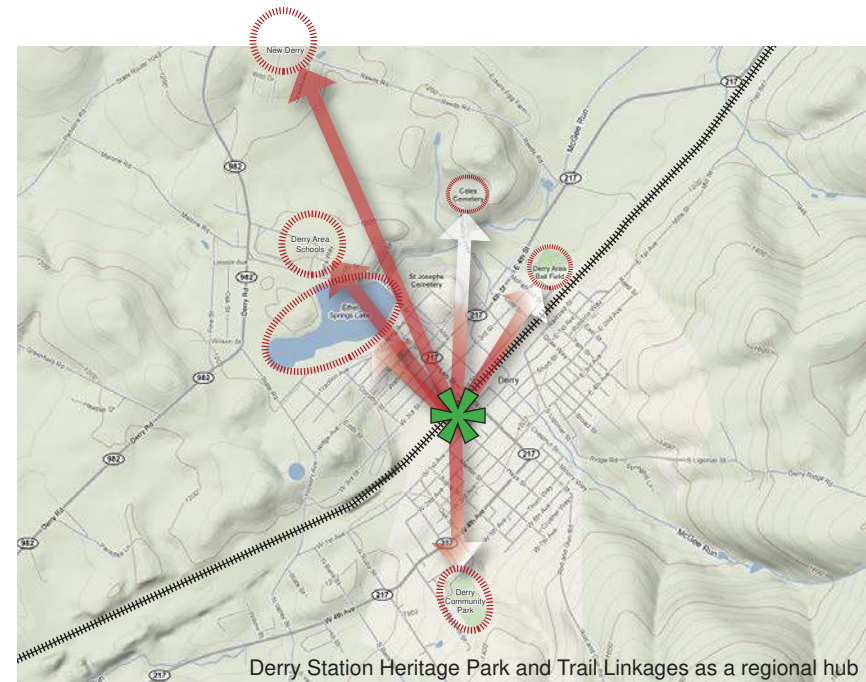
With the development of Derry Station Heritage Park and Trail Linkages and associated enhancements to the Community Park and other proposed enhancements, Derry has the potential to be the hub of recreation and heritage activity for the Chestnut Ridge. There are a wealth of important destination assets located within convenient proximity to Derry that offer residents and visitors a diversity of experiences.

- Derry Township
- Blairsville
- New Alexandria
- Conemaugh National Recreation Area
- Loyalhanna National Recreation Area
- Keystone State Park
- Forbes State Forest

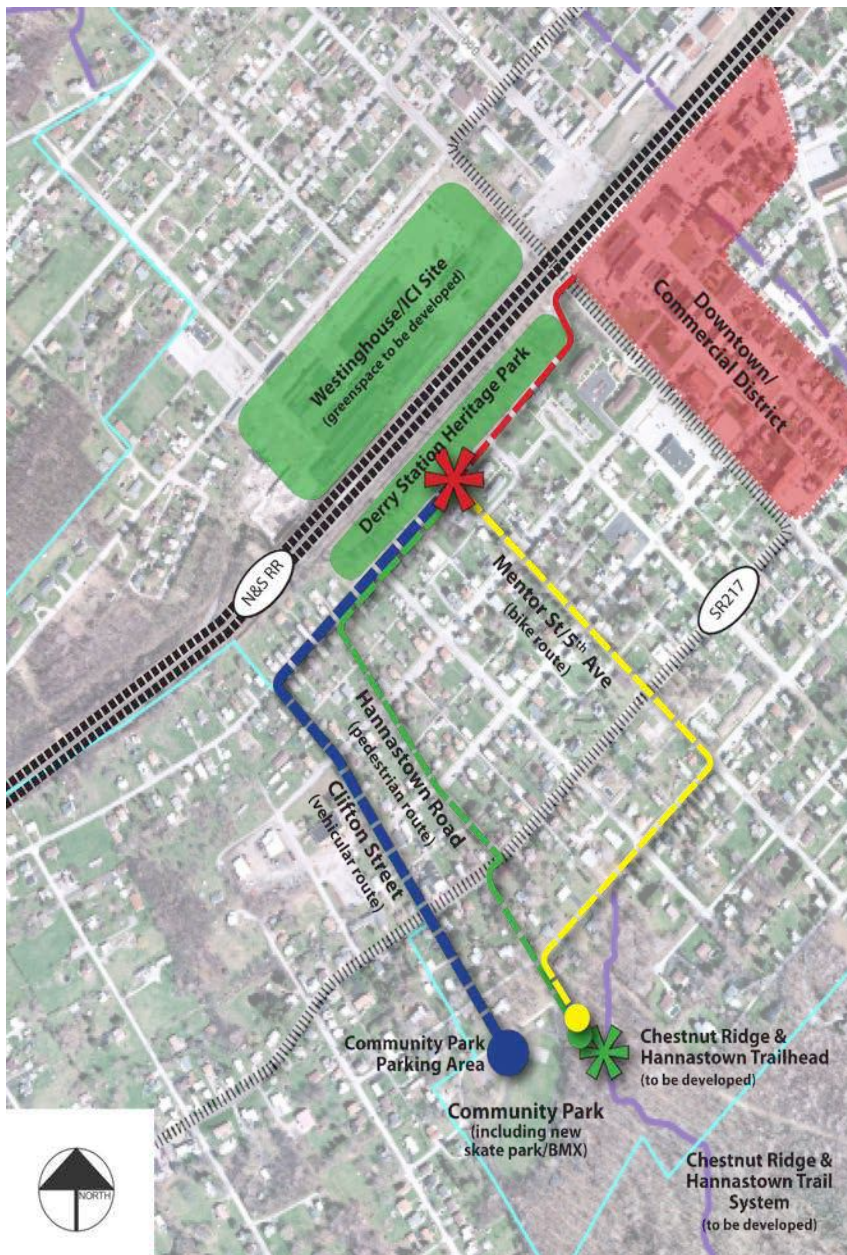


- State gamelands
- Ligonier (via the ridge)
- Latrobe
- Canal (remains)
- Old quarries
- Linn Run & Laurel Mountain State Parks

This is just a partial list of some of the area assets that can be easily accessed from Derry. Critical to Derry building on its central location within the Chestnut Ridge area of the Laurel Highlands is the development of the trail network and Derry being the “go to” hub of recreation/heritage-based tourism support.



Derry Station Heritage Park and Trail Linkages as a regional hub



INTERNAL LINKAGES

As Derry develops its place as a regional hub of recreational activity, it must also develop the quality of life for the local residents. The development of the Derry Station Heritage Park and the redevelopment of the Derry Community Park are two basic components of this effort. Establishing clear linkages between these two major assets in the community is integral to the success of both. It is important to separate these linkages by type: vehicular, pedestrian and bicycle.

The recommended routes are indicated in the diagram to the left. Also important is the development of a safe and convenient linkage between Derry Station Heritage Park and the Downtown commercial district.

Wayfinding (discussed in greater detail later in this report) and public safety are also critical components of this experience. These steps will also help Derry become more walkable.



www.walkscore.com/nearby/derry-pa
 Derry's **Walkscore**[®] (www.walkscore.com/nearby/derry-pa) is 55 out of 100 (somewhat walkable).

What makes a neighborhood walkable?

- **A center:** Walkable neighborhoods have a center, whether it's a main street or a public space.
- **People:** Enough people for businesses to flourish and for public transit to run frequently.
- **Mixed income, mixed use:** Affordable housing located near businesses.
- **Parks and public space:** Plenty of public places to gather and play.
- **Pedestrian design:** Buildings are close to the street, parking lots are relegated to the back.
- **Schools and workplaces:** Close enough that most residents can walk from their homes.
- **Complete streets:** Streets designed for bicyclists, pedestrians, and transit.

DERRY STATION HERITAGE PARK

The development of the Derry Station Heritage Park and Trail Linkages was the centerpiece of the community design workshop. A wide variety of ideas and concerns were addressed by the participants as they developed their ideas for not only the park site, but its place in the Greater Derry Area.

The participants were encouraged not to limit themselves to the specific 5.6 acres, but instead to think conceptually at the area around the site and how the park fits into its context.

With that in mind, it is important to think of these drawings and notes as *idea pieces* beginning the planning and design process and not as the actual designs for the park and community.

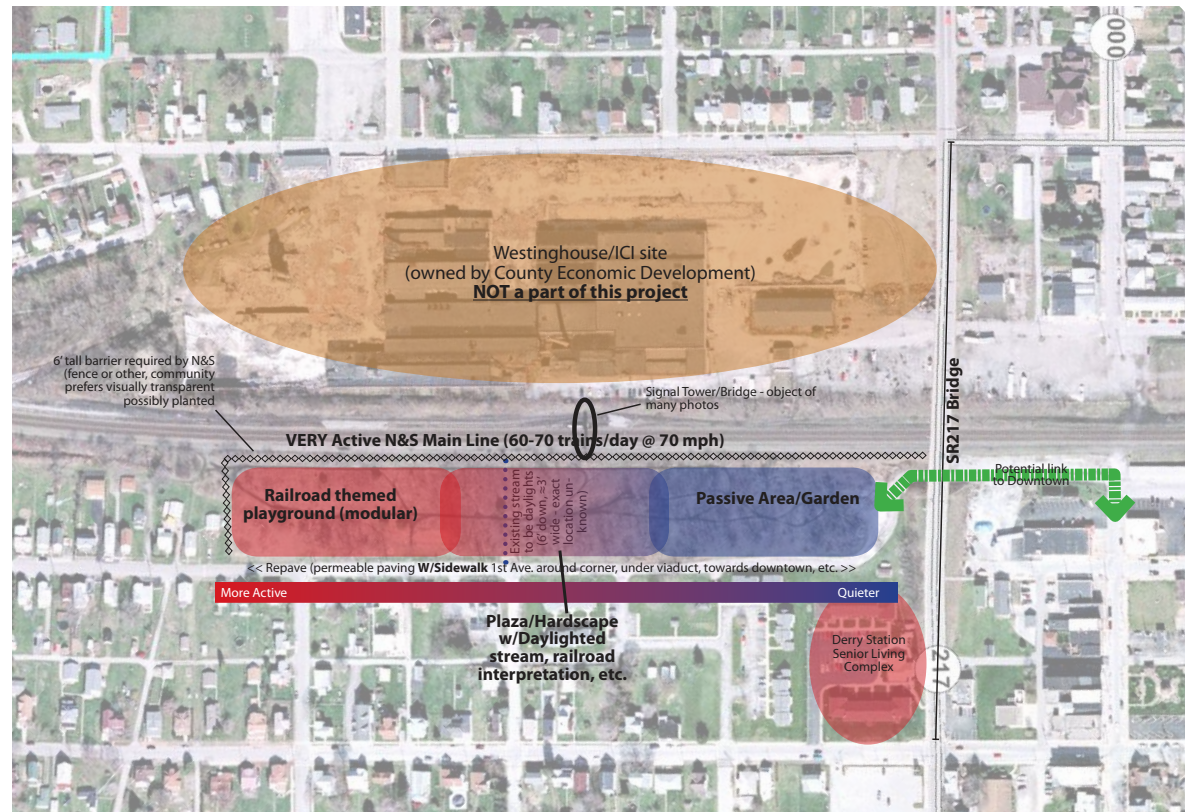
The participants viewed the development of Derry Station Heritage Park and Trail Linkages as a potential centerpiece of the community revitalization effort as well as the potential “hub” of a regional recreational trail and heritage system for the Chestnut Ridge.

Some of the programmatic ideas that citizens identified as the foundation of the park site development include:

- Integrate biodiversity / indigenous plants
- Permeable paving
- Railroad heritage theme throughout
- Effective wayfinding
- Park Programming
- Quiet area (east end of park)
- “Daylight” stream
- Central plaza
- Modular, multi-station playground (ALL ages) (west end of park)

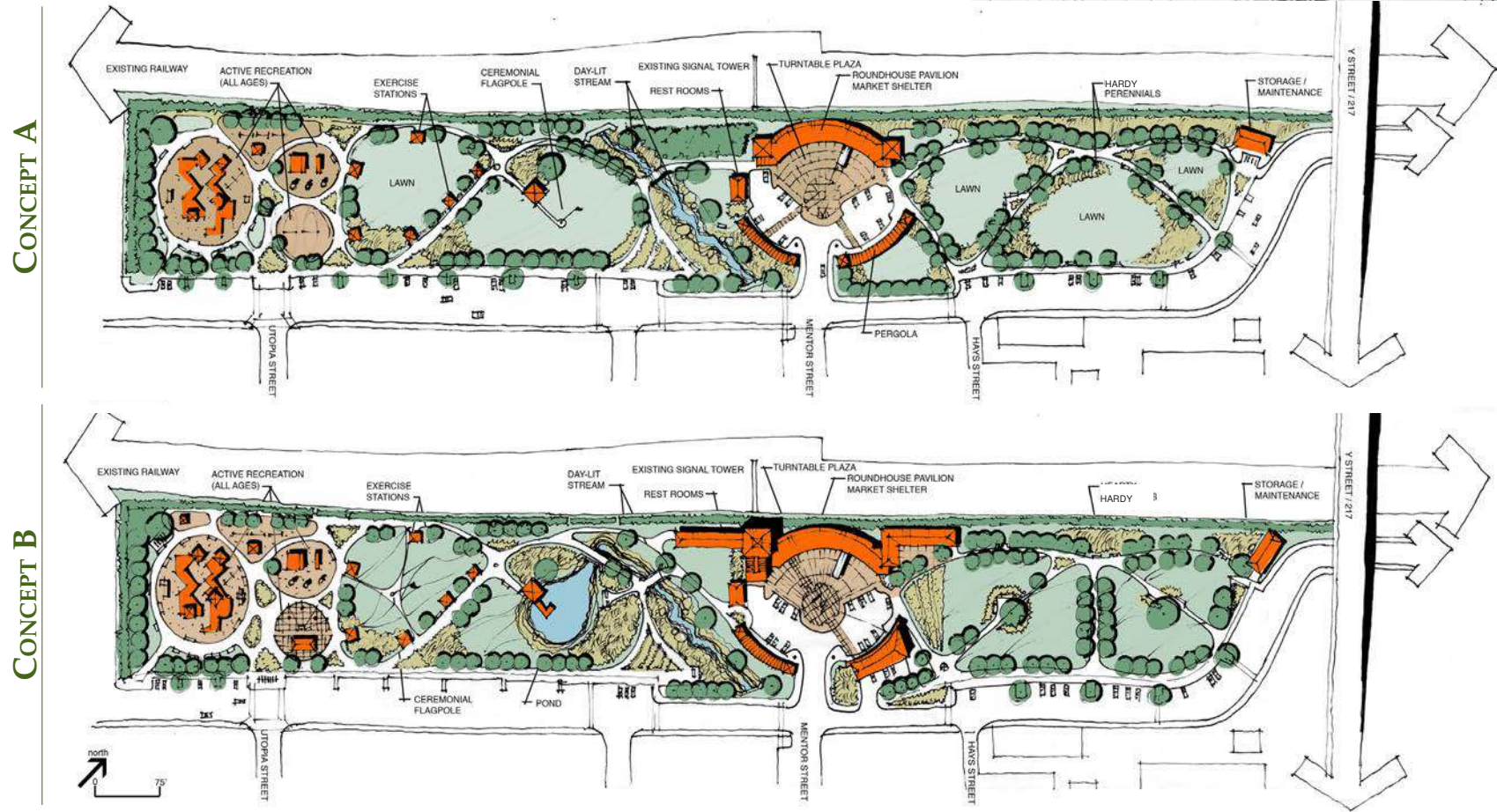
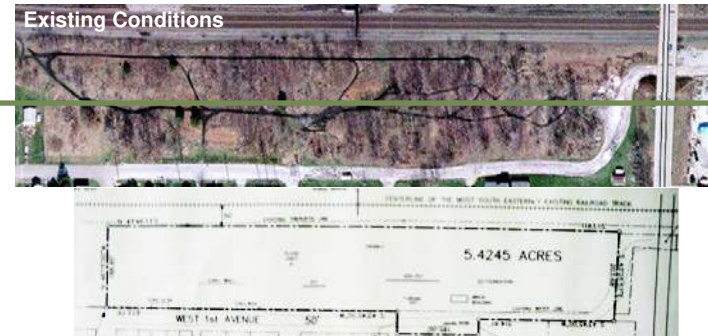
- Access to downtown via First Avenue extension
- Therapeutic garden
- Walkability / pedestrian & bicycle access
- Farmer’s Market
- On-site parking
- Safety barrier between park and railroad tracks
- Visual access of railroad tracks
- Linkage to Derry Community Park

A conceptual diagram of the Derry Station Heritage Park and Trail Linkages as developed by the workshop participants is presented below:



DERRY STATION HERITAGE PARK: OVERALL DESIGN CONCEPTS

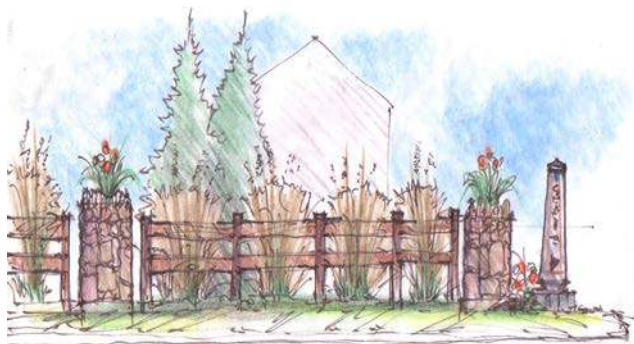
The overall design of the Derry Station Heritage Park as presented below, shows a major redevelopment of the site. The community investment in this project would necessitate a long-term lease of the property to make the investment feasible. A more “natural” approach/minimal development scenario is described later (page 22) in this report, which is the best option for this site if there is not a long-term lease.



DERRY STATION HERITAGE PARK: QUIET AREA

The eastern section of the park (adjacent to the Derry Station residences) could be developed as a quiet area. This area could be used as a bicycle trail head/way point, but should not be developed as an active recreation resource.

- Therapeutic garden
- Vegetable/Community garden
- Wildflower garden (link to nearby greenhouses)
- Farmer's market (in parking area)
- Sensory garden
- Sitting areas
- Passive recreation
- Interpretive signage



Possible screening/barrier along First Street to provide additional privacy for the Derry Station residences.

CONCEPT A



CONCEPT B





Current Conditions

Proposed development of the quiet area along First Street showing bike lane, parking (with integrated permeable paving materials and rain gardens). A picnic pavilion is also shown. The open areas can be developed as lawns (higher maintenance) or as gardens with local residents leasing plots, or maintained by local service organizations managing the area for the benefit of the community.

The garden plots could be developed as a “producer” for a local farmer’s market.

This area could be maintained through an “Adopt-A-Spot” program.

A section of the Quiet Area could be designated as a “Grove of Honor” with a tree planted in recognition (with plaque) of all local residents who lost their lives in the line of duty.

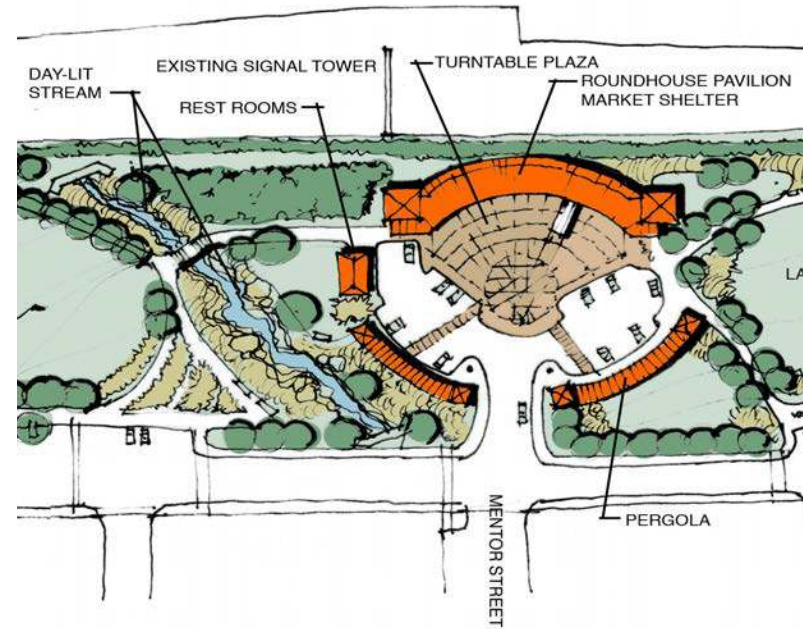
DERRY STATION HERITAGE PARK: CENTRAL PLAZA

The central section of the park could be developed as a formal plaza and as a transition between the quiet area and the active area/modular playground. This area could be used as a community gathering space. Some of the features of the central plaza include:

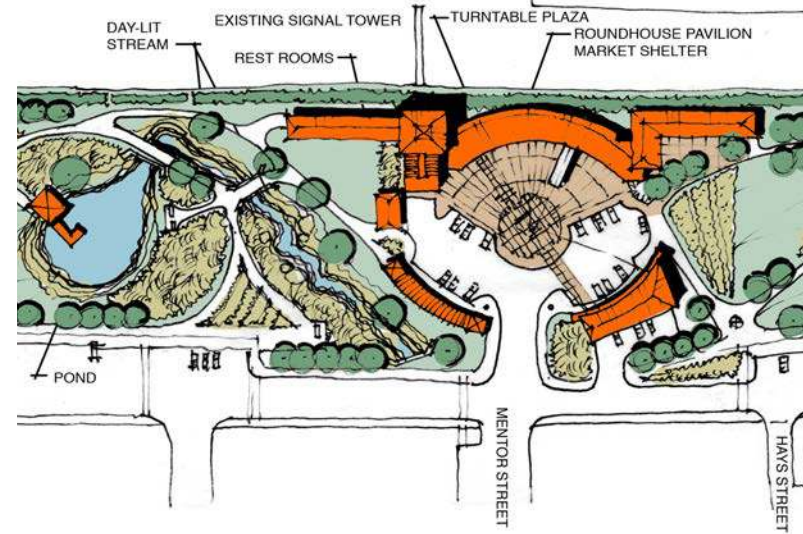
- Railroad theme
- Plaza structure in a character similar to the old turntable/roundhouse
- “Daylighting” of stream
- Tower/platform for viewing trains
- Mixture of hardscape and softscape
- Potential location for farmer’s market
- Public restrooms



CONCEPT A



CONCEPT B





The central plaza is designed to be reminiscent of the old roundhouse/turntable. The towers on either end can be used as train viewing platforms. The bays can be open or enclosed to accommodate market/vendor stalls or small shops. The space can also be available for rent for weddings and other events. The central water feature provides visual interest and white noise for sound management. The lower level of the towers can be developed as a railroad museum. The primary characteristics of this space are community gathering for events, informal markets and flexibility for a wide variety of community needs.



The central plaza is also designed to be reminiscent of an old roundhouse/turntable. The gazebo takes on the character of a roundhouse at a more human scale. The openness of the design makes it well-suited for a variety of uses. The primary characteristics of this space are community gathering for events, informal markets and flexibility for a wide variety of community needs.



One participant suggested that a unique attraction, like a carousel, be the centerpiece of the central plaza. An idea of a carousel with vendors and an open plaza is shown above.



This illustration shows a potential “close-up” view of the roundhouse/gazebo. It could be used for open air markets, receptions, concerts and still support retail space nearby.



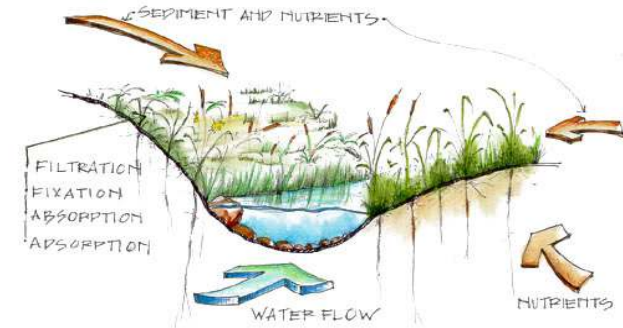
One of the recurring ideas for the central plaza was a farmer's market. The illustration above shows a market in a central pavilion or the “roundhouse” structure.

STREAM DAYLIGHTING

The “daylighting” of the stream that runs through the Derry Station Heritage Park site offers multiple benefits.

- Natural drainage/stormwater management (see illustration to the right)
- Enhanced visual quality
- Focal point for Derry Station Heritage Park and Trail Linkages

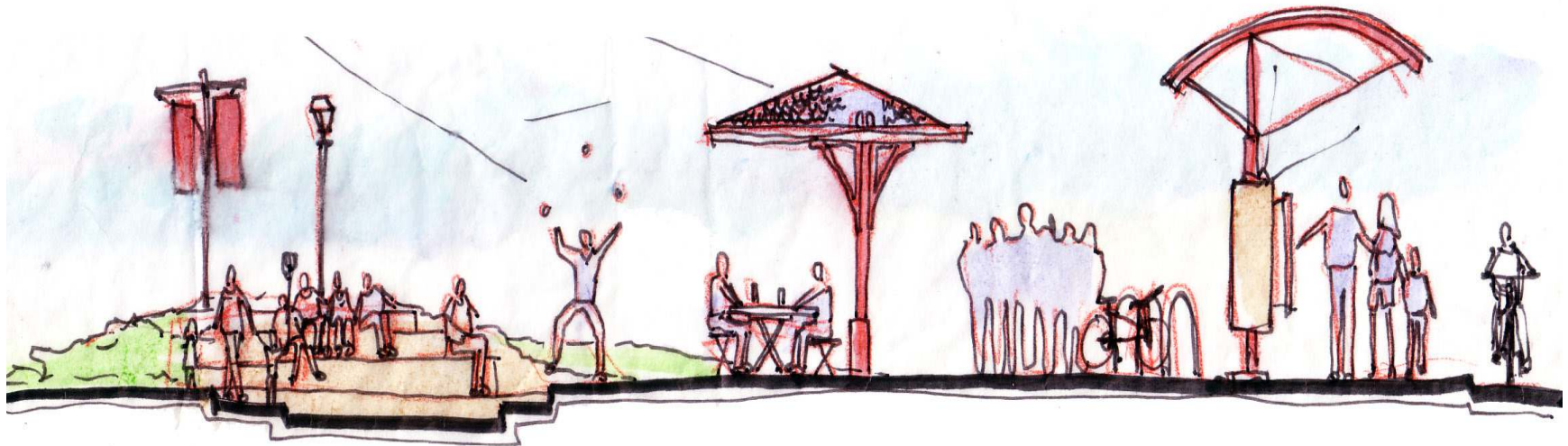
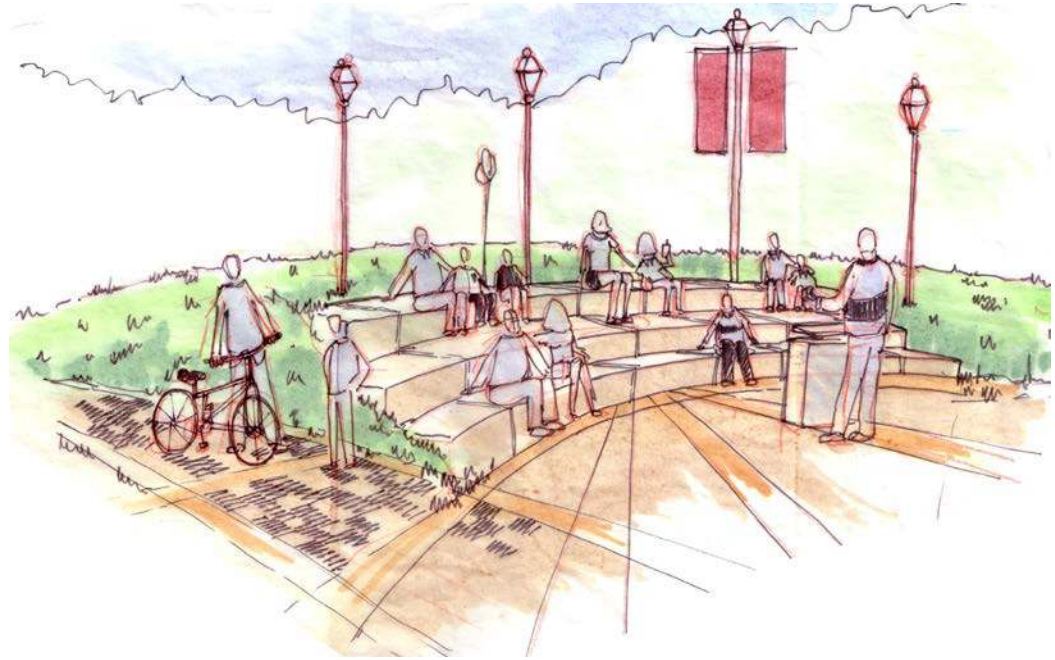
The illustrations to the right suggest several different approaches to daylighting the stream ranging from a more natural approach to a more formal design for the plaza integrating a wetland.

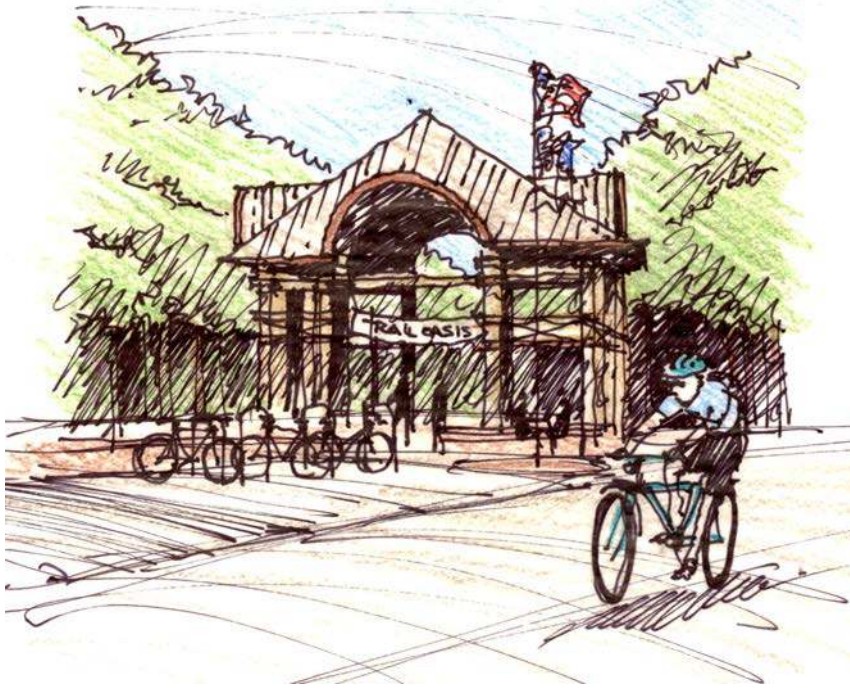


PLAZA AMENITIES

These illustrations suggest some potential amenities that might be included in the Derry Station Heritage Plaza:

- Small stage/performance area
- Picnic shelter
- Bike rack
- Information kiosk





TRAIL ASSOCIATED AMENITIES

In addition to the public amenities of the central plaza, an important opportunity for the Derry Station Heritage Park and Trail Linkages is its potential to serve as a hub / trail head for the local trail network being developed. Some of the features that were identified as important include:

- Gateway to Derry Station Heritage Park Bike racks
- Public restrooms
- Drinking fountain
- Ice cream / snack bar
- Picnic tables & benches
- Bike rental / repair
- Bike storage (secure)

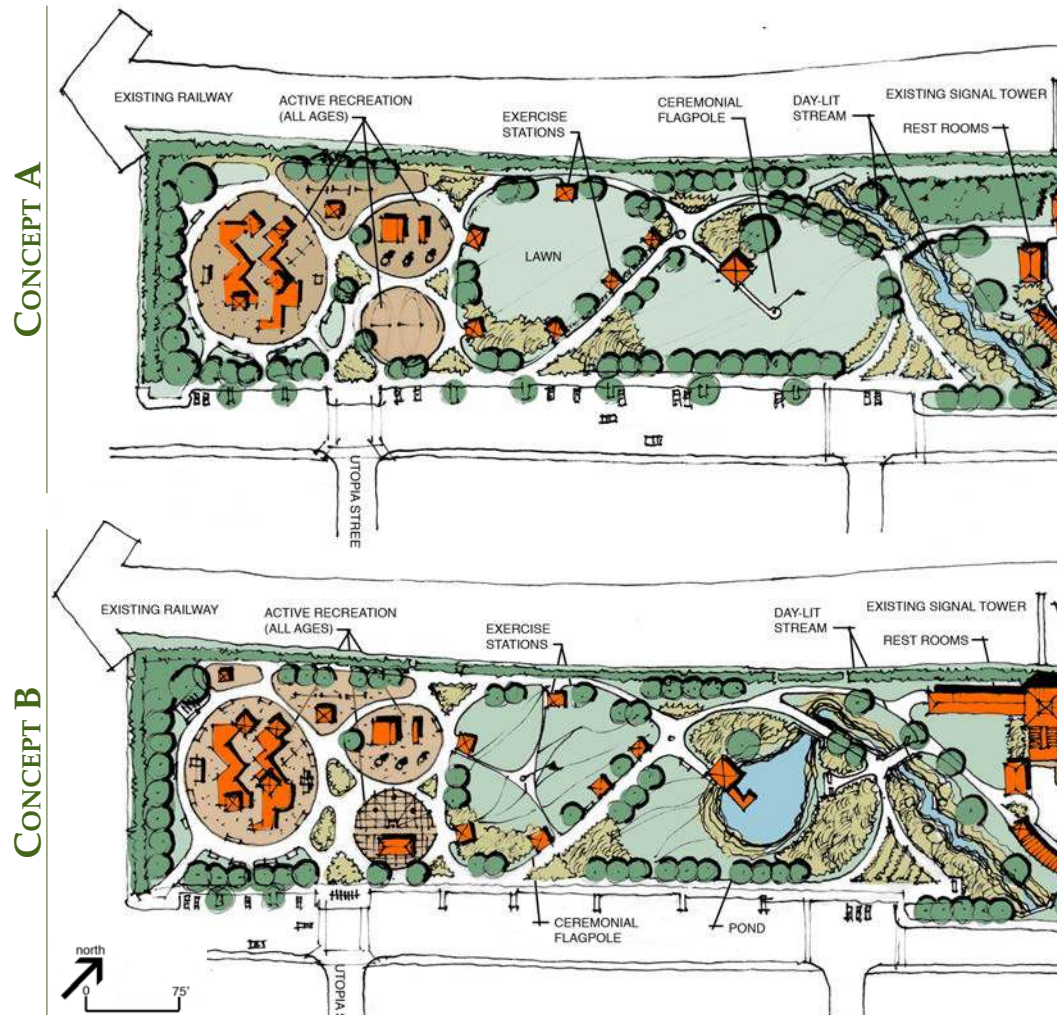


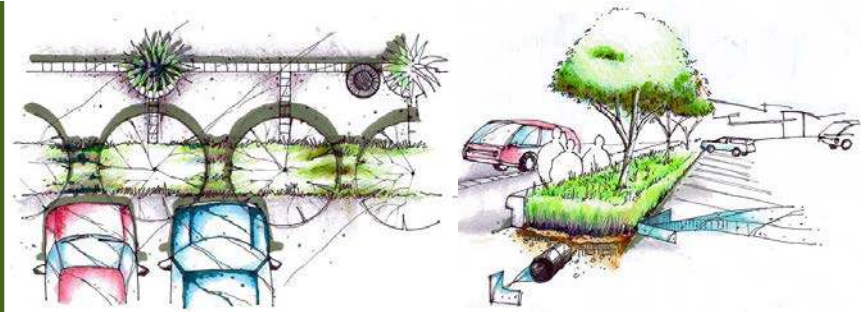
DERRY STATION HERITAGE PARK PLAYGROUND

This section of the park was identified as being most suitable for a modular, all-ages playground.

The options for this area are as varied as the community's imagination:

- Adventure playground/structure
- Splash park
- Fitness trail/stations
- Pond/open lawn





Bio-swales integrated into parking lots provide shade, visual appeal as well as an effective means of managing stormwater and can remove particulates and other pollutants from hard surface run-off



NATURAL DRAINAGE/ STORMWATER MANAGEMENT

Whenever possible, utilizing natural systems to manage stormwater will enhance the water quality of local streams and reduce the load on the storm sewer infrastructure. These *biofilters* and/or *rain gardens*, especially in conjunction with porous paving systems will retain or detain the water, and at the same time remove many contaminants coming from adjacent hard surfaces such as sidewalks and parking lots. Rain gardens can also be used to manage water from roofs.



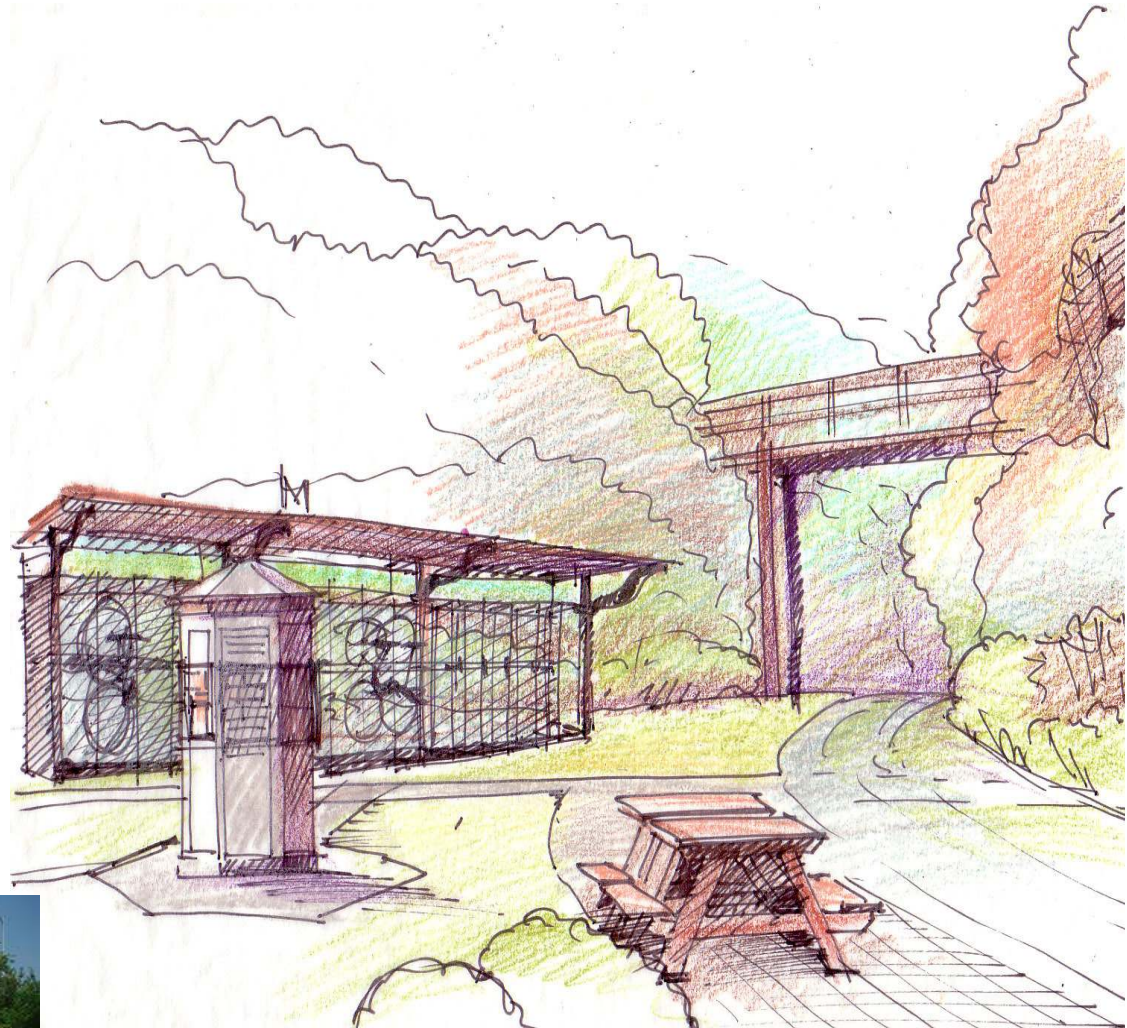
In addition to being effective in managing stormwater and being aesthetically pleasing, they are very cost effective and can be designed to require minimal maintenance.

DERRY STATION HERITAGE PARK MINIMAL DEVELOPMENT SCENARIO

The scenarios presented thus far have focused on somewhat extensive development of the site. An alternative option is keeping the site more natural/wooded. There is value in having a wooded/natural area in the center of town-to keep it green! With the addition of a bicycle rack/storage area, an information/wayfinding kiosk and a small picnic area, this would provide a quiet area and an opportunity for the local schools to use it as an ecological study area.

A wooded multi-use trail system and seating/small pavilions or picnic shelters/interpretive panels/community gardens could be developed. By thinking of redevelopment of Derry in a holistic way, the installation of features previously mentioned in Concepts A & B, could be planned and developed in other areas of Derry.

An interior trail system is a possibility in this development scenario.



Current Conditions

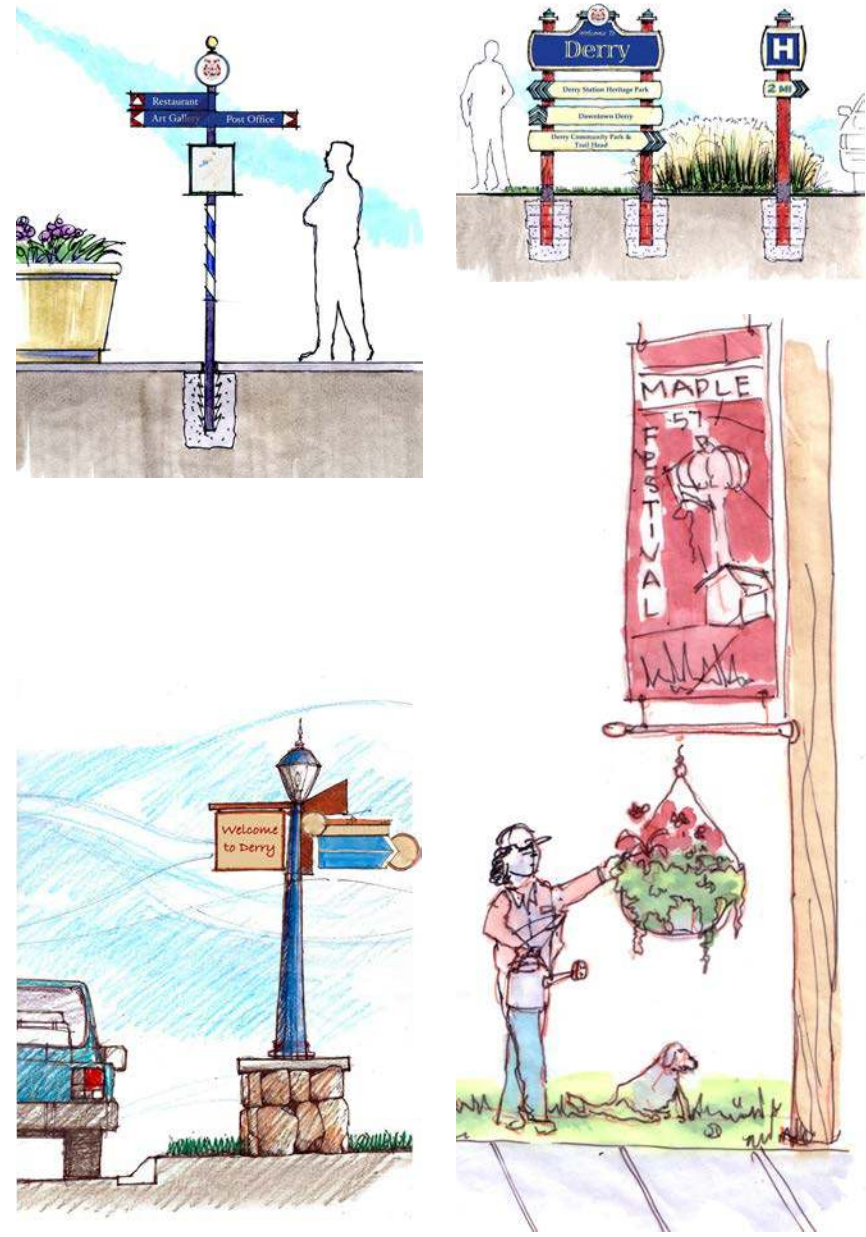
A protected bike storage area, informational and wayfinding kiosk built in the style of some of the structures found along Pennsylvania's railroads and some picnic tables would provide basic services for bikers and other trail users. This represents a minimalist approach to the development of the Derry Station Heritage Park and Trail Linkages project. It also is a scenario that requires the least amount of up front and maintenance costs.

If the lease for the site isn't for at least 25 years, this is far and away the best option.

WAYFINDING

Most of the important community amenities in Derry are not along the main road (SR217) and are therefore not easily found. An effective wayfinding system not only communicates directions effectively, but also enhances the visual character of the corridor. Hanging baskets and banners add a very positive visual character to the downtown and an adopt-a-spot program helps involve local residents and businesses in the downtown revitalization effort.

The drawings on this page suggest some possible designs for signage in the Derry area.





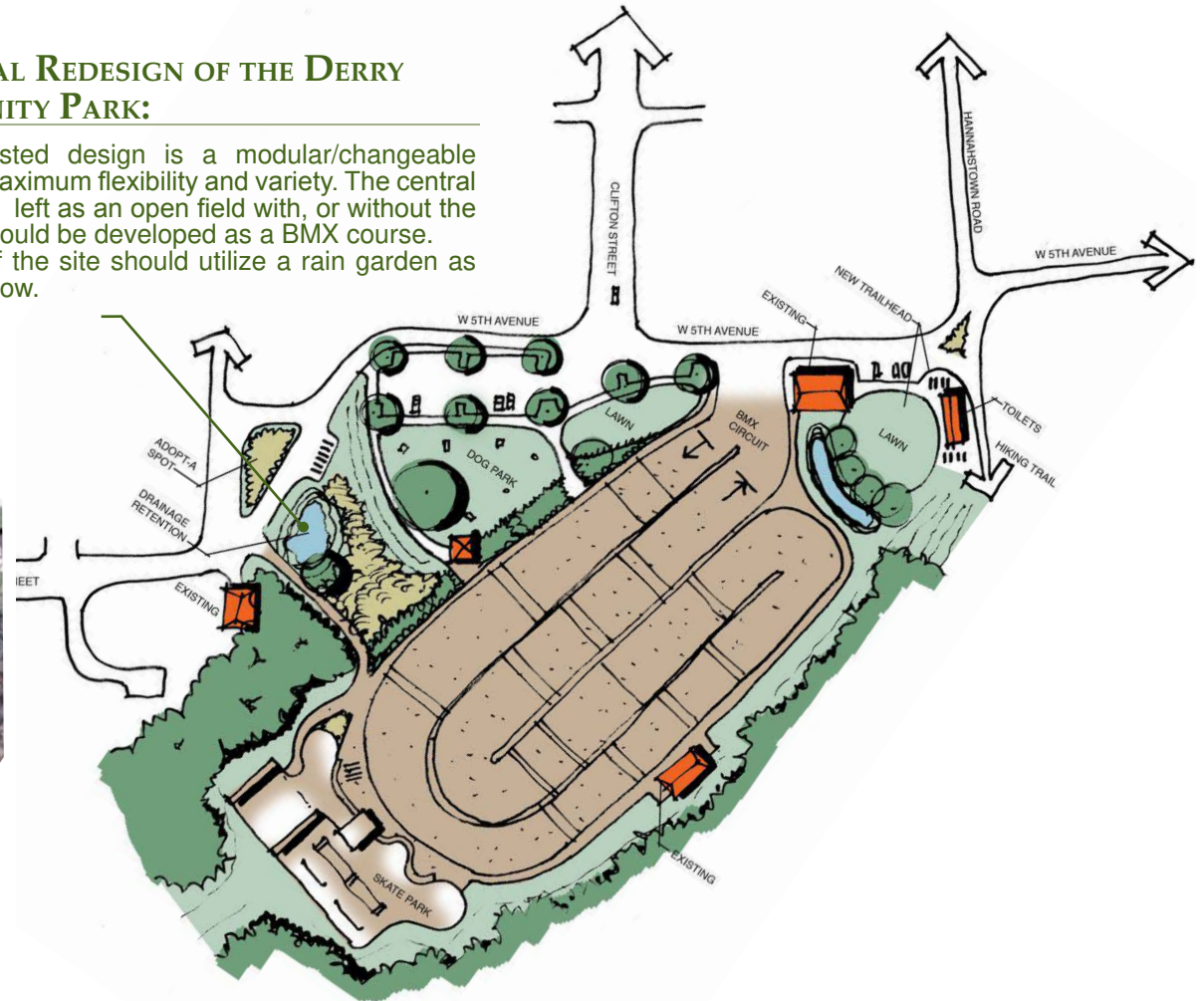
The on-street connection between the public amenities, such as Derry Station Heritage Park and Trail Linkages and the Community Park should be safe and pleasant experiences. These linkages should separate bicycle (bike lanes), pedestrian (sidewalks) and vehicular traffic, provide wayfinding and be an integral part of the Derry neighborhoods. This drawing suggests how these design features might be applied to Hannastown Road.

DERRY COMMUNITY PARK & TRAIL HEAD

A “companion” to the Derry Station Heritage Park is the Derry Community Park and Chestnut Ridge Trail Head.

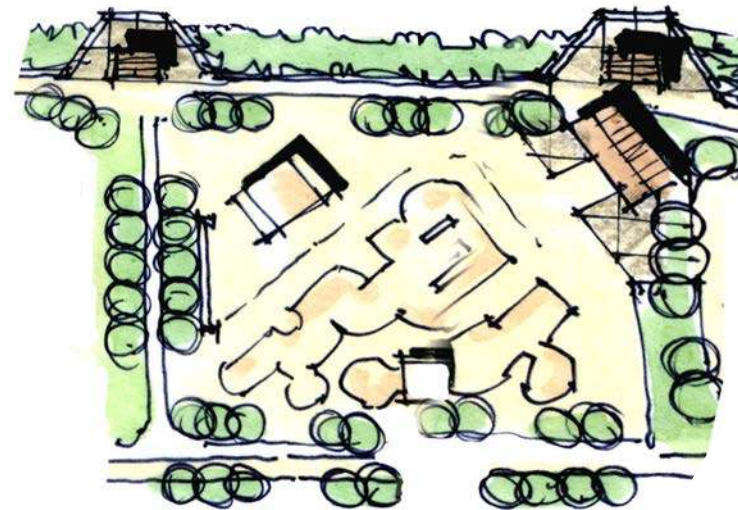
POTENTIAL REDESIGN OF THE DERRY COMMUNITY PARK:

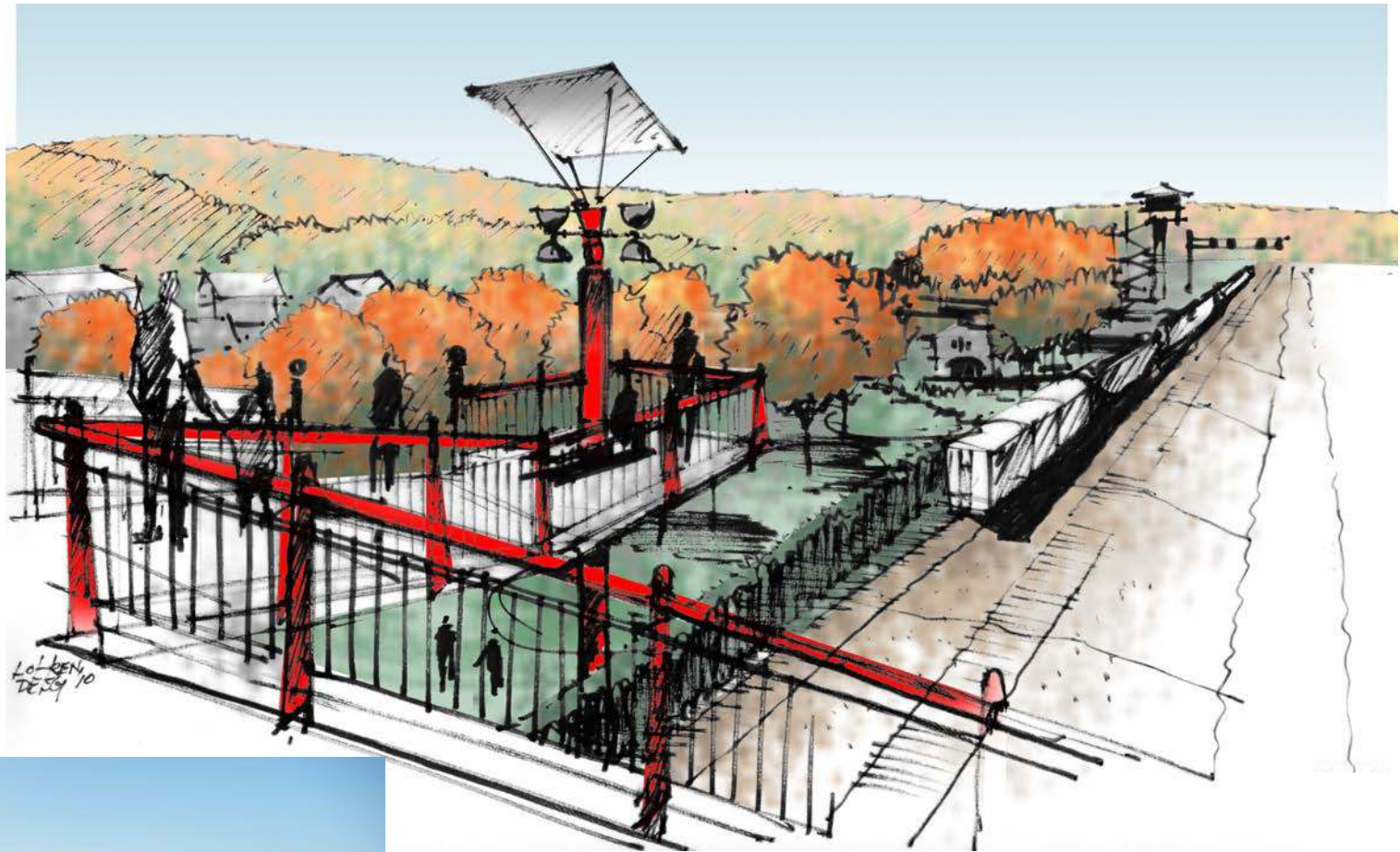
The suggested design is a modular/changeable layout for maximum flexibility and variety. The central field can be left as an open field with, or without the track, or it could be developed as a BMX course. Drainage of the site should utilize a rain garden as pictured below.



COMMUNITY PARK AMENITIES

- Hiking trail
- Tennis courts (fix up existing)
- Basketball court(s) (fix up existing)
- Volleyball court(s)
- Walking/Jogging track
- Public restrooms & drinking fountains
- Day camp facilities (for Girl & Boy Scouts)
- Enhanced trail head for the Chestnut Ridge Trail (to be developed)
- Interpretation (natural features and local heritage)
- Seating

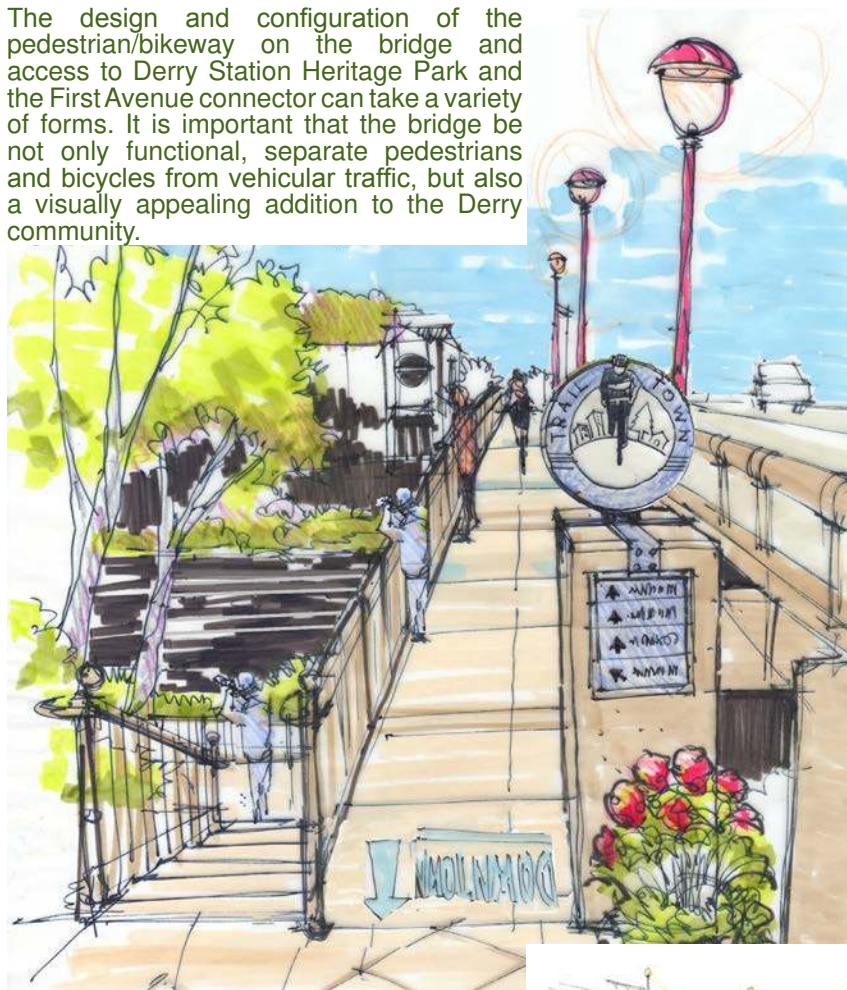




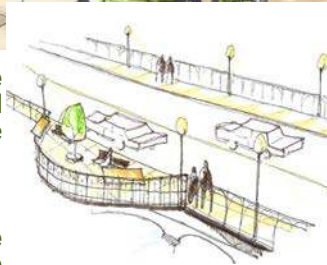
PEDESTRIAN/BIKEWAY ON SR217 BRIDGE WITH TRAIN OBSERVATION PLATFORM & ACCESS TO DERRY STATION HERITAGE PARK & 1ST STREET CONNECTION

One of the points most mentioned during the charrette was the unique and special opportunity for viewing trains passing under the traditional signal tower. In addition to providing safe pedestrian and bike access across the railroad right-of-way, an integrated walk/bikeway with a platform for train observation with direct stair access to Derry Station Heritage Park is invaluable.

The design and configuration of the pedestrian/bikeway on the bridge and access to Derry Station Heritage Park and the First Avenue connector can take a variety of forms. It is important that the bridge be not only functional, separate pedestrians and bicycles from vehicular traffic, but also a visually appealing addition to the Derry community.



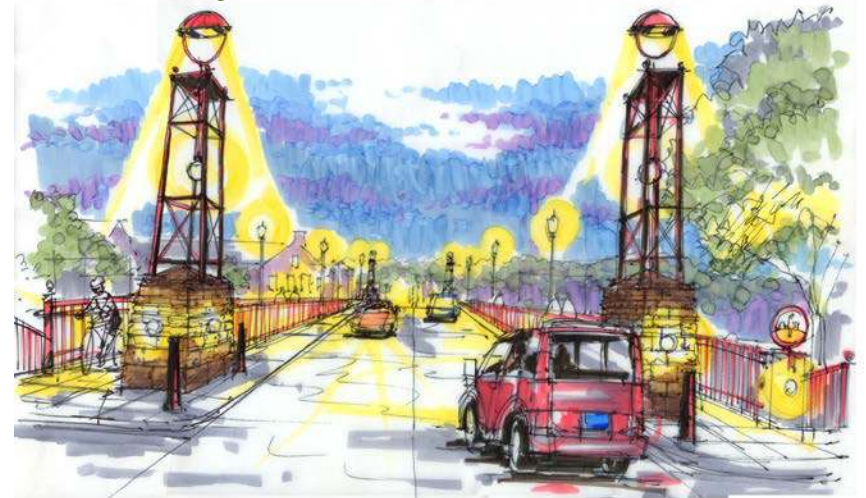
The illustration above features a more traditional “urban” design for the bridge and pedestrian/bicycle way. Wayfinding signage is incorporated into the bridge structure.



The illustration to the right features a simple “bump-out” incorporated into the bridge structure for train viewing and sitting.



The illustration above features a more “rustic” design using indigenous stone for the bridge structure.

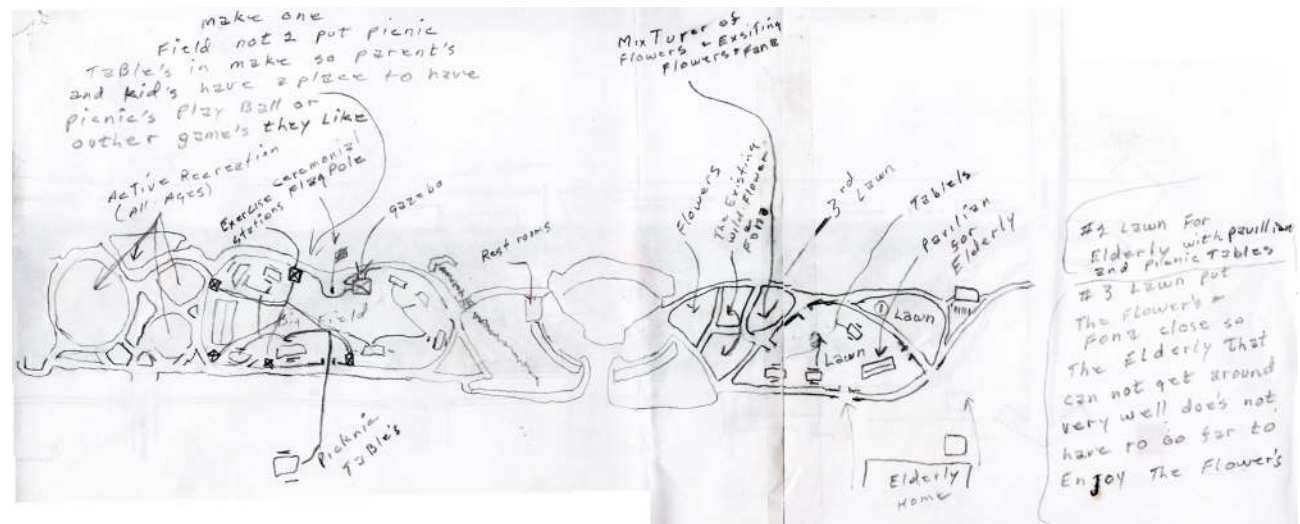
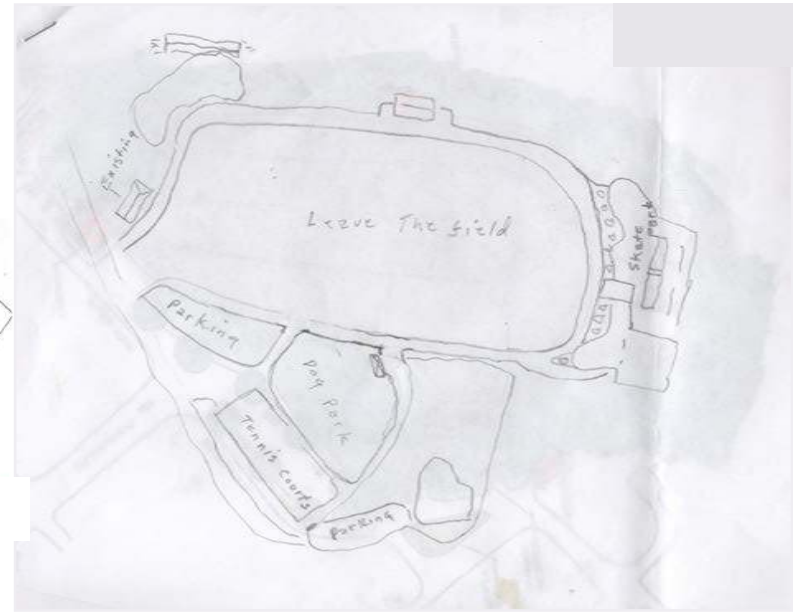
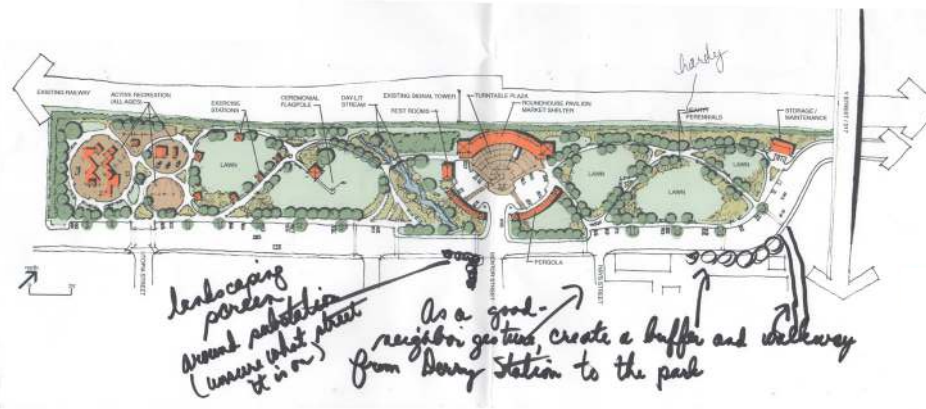


The illustration above features a more “artistic” design for the bridge and pedestrian/bicycle way. Wayfinding signage is incorporated into the bridge structure and the bridge serves as a *Gateway*.

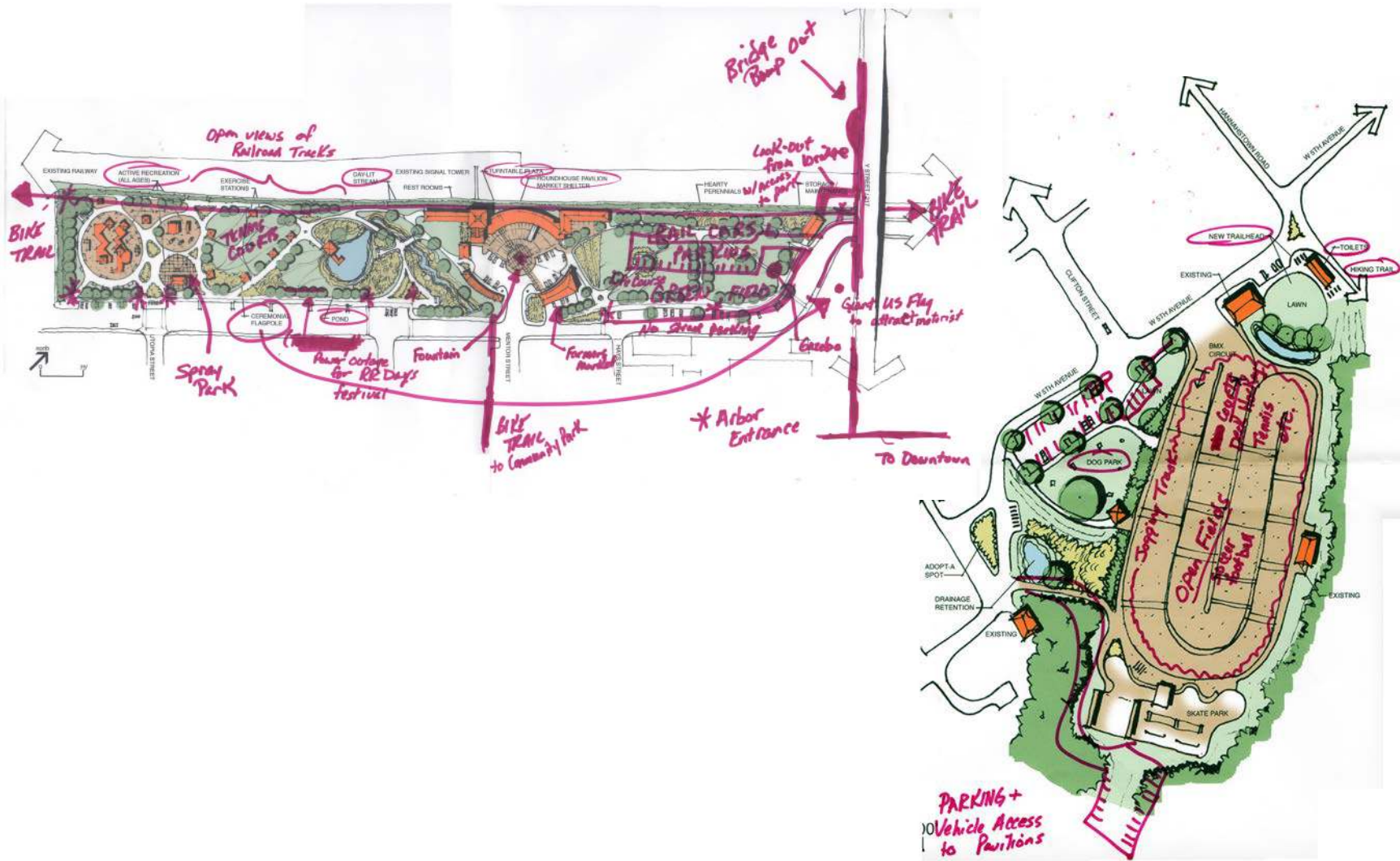
DERRY STATION HERITAGE PARK & TRAIL LINKAGES ■ COMMUNITY DESIGN CHARRETTE WORKSHOP

PARTICIPANT DRAWINGS OF IDEAS FOR DERRY STATION HERITAGE PARK & DERRY COMMUNITY PARK

The following drawings were submitted by charrette participants through the community survey or via "marking-up" of the proposed park designs. These are all viable options to be considered as this project moves forward.

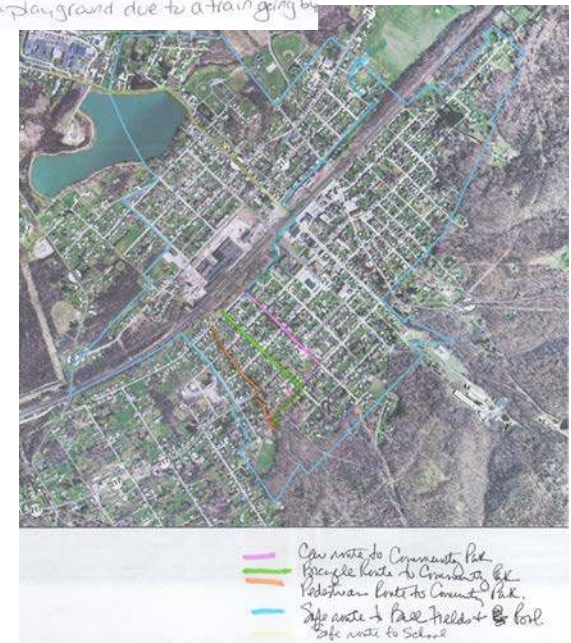
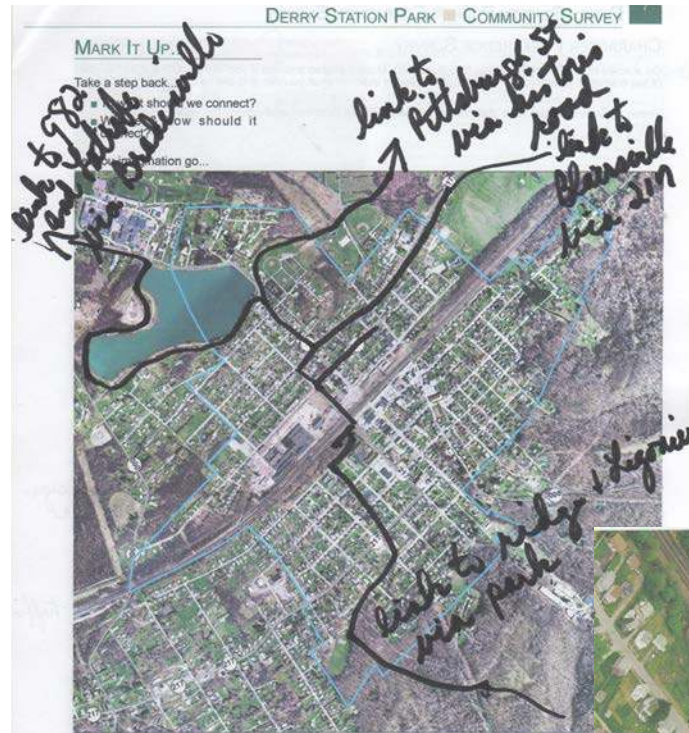


PARTICIPANT DRAWINGS OF IDEAS FOR DERRY STATION HERITAGE PARK & DERRY COMMUNITY PARK (CONTINUED)



DERRY STATION HERITAGE PARK & TRAIL LINKAGES ■ COMMUNITY DESIGN CHARRETTE WORKSHOP

PARTICIPANT DRAWINGS OF IDEAS FOR DERRY STATION HERITAGE PARK & DERRY COMMUNITY PARK (CONTINUED)



- Something for Kids and Seniors
- Biking trails to other Communities
- Community Park middle-aged children focus ^{due to get dirty!} _{and space}
- Dog walking
- * Derry Heritage Park - ^{not just} fully activated ^{with} _{visitor habitat bikers/walkers}
- Interactive Panels for multiple generations
- Railroad theme throughout
- Need leaders: Find them!
- Outlook tower in Heritage
- Three ~~trails~~ connecting the parks
- Something the public can see

- Basketball court
- Tennis Courts
- Deck Hockey
- Skate Park _{for surfers, skateboarders, maybe}
- BMX _{to be original}
- Garden Area
- Round House _{something to see!}
- Train Station
- Going Green/Ecologic focus
- Botanist Review of present work
- Opening of Stream _{fontaine needs water}
- Willing to move some things around

- Parallel Bike trail to tracks
not with trail?
- Pond
- Carousel
- Dog Park
- Dog Shows
- Over looks on the Bridge*
- Railroad B+B
- Elderly amenities near *Library Station*
- Pedestrian Bridge
- fence off the tracks

- Move building on East side
- Porcelain Park get the focus
- Common spaces for Rest & Relaxation*
- How long to design, build, etc
- Like the roundhouse idea with the log piles
- Something for teenagers to do in town
near the rail?
- Are Skate Parks in vogue?
- Tennis Courts are usable now
- Don't lose the football field*
over Field
- Need good Maintenance Plan
- Some Place that you don't have to drive to

DERRY STATION HERITAGE PARK AND TRAIL LINKAGES COMMUNITY SURVEY SUMMARY



The following pages present a summary of the Community Survey and *Character Preference Survey* completed by participants during the **Derry Station Heritage Park and Trail Linkages Community Design Workshop**. The results of the *Character Preference Survey* show the range of comments for each image. There were not enough "scores" recorded to provide a meaningful average. The comments are summarized. The survey represents all those participating in the survey and is not scientific.

DERRY STATION HERITAGE PARK & TRAIL LINKAGES

The following is a list specific activities, facilities and/or programs survey respondents indicated they would like to see in Derry.

- Skatepark
- Quiet area/park for seniors
- Observation deck for trains
- Trails (hiking/biking)
- Horseshoe pit
- Park benches
- Dog park
- Historical growth
- Economic growth
- Basketball court
- Climbing wall
- Exercise classes for older adults
- Connections to trails
- Butterfly/bird garden
- Water feature (fountain, stream, pond)
- Art in park (railroad related)
- Picnic areas
- Skateboard area
- Railroad museum
- Splash park
- Farmer's market
- Teen center
- Natural landscaping

When Aunt Mary comes to visit, where do you take her? (Doesn't have to be in Derry)
Be Specific

- Twin Lakes Park Mall
- Linn Run State Park
- Keystone State Park
- Pittsburgh
- Ligonier
- Seven Spring
- Derry Station Art Center
- Fallingwater
- Ethel Springs Lake Trail
- Ligonier Country Market
- Restaurants: Carbones, Dato's
- Church/worship
- Activities around the lake
- Walking paths
- Community Park
- One Room School
- Fulton Park

When Aunt Mary comes to visit, where **don't** you take her? (Doesn't have to be in Derry)
Be Specific

- Downtown Derry (not enough shops)
- Old Westinghouse/ICI site
- Bradenville
- Dogwood Acres
- Miller Street, Latrobe
- Bars

COMMUNITY DESIGN CHARRETTE WORKSHOP

What's stopping us from getting this done and how can we get past it?

- Lack of coordination between different groups & political units
- Participation (especially young people)
- Apathy
- Lack of leadership
- No follow-through (projects or laws)
- Negative attitudes (show results & attitudes will change – has started with the charrette)
- Just start and it will grow
- Inertia
- Lack of funds
- Leadership
- Need hard work by many people

Please rank the highest priority projects/programs for your household? Multiple use park

- Trail connecting Derry Station Park with the Derry Community Park
- New skateboard/roller blade/stunt bike park
- A community garden
- Dog Park
- Picnic area
- A large playground

ASSETS	LIABILITIES	NEEDS	DREAMS
<ul style="list-style-type: none"> ■ Land already there ■ Trails already there ■ Trains/Railroad ■ People ■ Railroad history/heritage ■ Small town atmosphere ■ Sports programs ■ Green space ■ Walking/biking trails/paths ■ Excellent school district ■ One room school (restored) ■ Historical Society ■ Churches ■ Friendliness ■ Volunteer fire department ■ Great leadership (mayor, council, police, borough employees) ■ A place for families & all ages ■ A “green” community ■ Low-tech activities ■ Picnic area(s) ■ Garden areas ■ Playground ■ View of Chestnut Ridge ■ Ethel Springs Lake ■ Location ■ Available land ■ Center of community ■ Surrounded by history ■ Lots of history 	<ul style="list-style-type: none"> ■ Poor attitudes ■ Lack of business in town ■ Drugs ■ Train safety ■ Abandoned/neglected properties ■ Brownfield(s) ■ One bridge/one throughway ■ Being on SR217 (too busy with through traffic) ■ Former Westinghouse/ICI site ■ Empty storefronts ■ Community separated by RR & bridge ■ Limited walkability ■ Take care of it ■ Safety for children ■ Too many HUD houses ■ No stores ■ Not enough law enforcement ■ Need to clean up town/downtown ■ Need to follow up on things ■ Ashamed to say you’re from Derry ■ High taxed (and nothing to show for it) ■ Zoning & codes not enforced ■ No recycling ■ Disrespectful children ■ The look of downtown ■ Poor access/visibility of parks ■ Jobs ■ More visible downtown (need @ grade rail crossing) ■ People don’t appreciate what’s in their own backyard 	<ul style="list-style-type: none"> ■ New businesses ■ Restaurants ■ Recreation for everyone ■ Jobs ■ Money ■ Financial support ■ Residential property improvements ■ Recreation improvements ■ Downtown development improvements ■ Community events ■ Employment opportunities ■ A place for families ■ Coffee shop ■ Specialty shops ■ Bike shop ■ Building enhancements ■ Connections – N/S & E/W ■ More stores ■ Less HUD houses ■ Lower taxes ■ Somewhere for kids to play ■ Somewhere for teens to play/hang out ■ Somewhere to enjoy nature ■ Recycling bins ■ Upkeep of sidewalks & curbs ■ Enforcement of codes & laws ■ Better bus transit ■ Sidewalks everywhere ■ Keep people from leaving the area 	<ul style="list-style-type: none"> ■ No drugs ■ Good things for kids to do ■ Good things for seniors to do ■ Good things for families to do ■ Revitalized/thriving town/downtown ■ Historical growth ■ Gardens ■ Bike center/trails ■ Improve basketball/tennis courts ■ Place where people want to visit (creating more commerce) ■ Restored Community Park ■ Building of Derry Station Park ■ Homeowners clean up around their properties ■ Find a way to help seniors/disabled take care of their properties ■ A Derry that people are proud of ■ “hub” like Ohiopyle ■ Trails bring visitors ■ Thriving businesses ■ All parts of towns linked ■ Derry as destination ■ Clean downtown with stores ■ Proud of being from Derry ■ Keeping up property values ■ “For the community” needs to come true ■ Train station/welcome center (with train overlook & view of signal) ■ Restroom/fountain for bike trail visitors ■ Community rooms for meetings ■ RR museum ■ Economic development ■ Make it a desirable place to live

DERRY STATION HERITAGE PARK & TRAIL LINKAGES ■ CHARACTER PREFERENCE SURVEY SUMMARY



What I like in this picture:

- Bike path (paved)
- Use on Utopia Street to link to Community Park
- Outdoors/natural surroundings
- Sharing the road & being safe
- Bike rider safety
- Rider wearing a safety helmet

What I **don't** like in this picture:

- Bike path not separated from road
- Street needs to allow parking on one side of street
- Needs larger area – not enough room for bikes, kids, strollers, wagons
- Not a thing



What I like in this picture:

- Natural trail, beautiful
- Scenic
- Country setting
- Softer trail surface
- Separated from vehicular traffic
- Quiet/peaceful/pleasant
- Exercise/running without the traffic

What I **don't** like in this picture:

- No comments



What I like in this picture:

- Fresh local produce
- Stimulates local economy
- Social gathering
- Introduction of new foods
- Great idea
- Brings visitors to town

What I **don't** like in this picture:

- There is nothing I don't like
- Competes with struggling local grocer

DERRY STATION HERITAGE PARK & TRAIL LINKAGES ■ CHARACTER PREFERENCE SURVEY SUMMARY



open stream

What I like in this picture:

- Natural area
- Scenic/beautiful/peaceful/quiet
- Trees
- I want to play in the water
- Serenity
- Pleasant, but needs to be upgraded for people to enjoy w/ path & benches

What I **don't** like in this picture:

- Looks great
- Too rustic for this project
- Could be smelly depending on what's in the water
- No path
- Needs a bench/large rock/large log



open space near railroad tracks

What I like in this picture:

- Not impressed
- Welcoming, you want to cross the bridge
- For being by tracks – this is a great idea
- Nice, quiet looking
- Open up the underground stream
- Arch bridge connecting N/S parts of proposed park
- Natural area
- Trail separate from road

What I **don't** like in this picture:

- There is nothing I don't like
- Tracks not fenced off
- More formal appearance
- Does not show fence options



stunt bike/skateboard facility

What I like in this picture:

- Lots of people
- Skate area for kids – good idea, get them off streets
- Kids enjoying themselves
- People outdoors
- Physical activity
- Skill development
- Playing together at different things
- Multi-use

What I **don't** like in this picture:

- Heavy development – little natural stuff
- Possible liability (safety equipment needed)

DERRY STATION HERITAGE PARK & TRAIL LINKAGES ■ CHARACTER PREFERENCE SURVEY SUMMARY



What I like in this picture:

- Safe opportunities for children
- Nice
- Physical activity for those with the energy
- Kids in town want a skate park
- Kids being active

What I **don't** like in this picture:

- Possible liability (safety equipment needed)
- Neighbors worry about noise & police protection
- Looks like a parking lot



What I like in this picture:

- Kids having fun
- Kids like this – they need a place to play legally
- Kids having fun outdoors – with proper safety equipment
- If this child is in a safe place
- Too dangerous

What I **don't** like in this picture:

- Not right for this location
- Dirt piles aren't very nice looking
- Too noisy & dangerous
- I hate everything about this – too much noise & dirt



What I like in this picture:

- Waste of energy & resources
- Group activity
- Great for a country setting, not a small town
- Something for ATV riders to do
- Noise
- I don't use ATVs, but my nephew loves this idea
- Kids having fun outdoors

What I **don't** like in this picture:

- Motorized vehicles can damage the environment
- Noise can disturb neighbors
- I hate everything about this
- Noise/dust
- Dangerous
- No way! I work all week with noise & I don't need this noise in the woods. I like peace & quiet
- Potential for kids going off trails

DERRY STATION HERITAGE PARK & TRAIL LINKAGES ■ CHARACTER PREFERENCE SURVEY SUMMARY



What I like in this picture:

- Kids being active outdoors
- Amazing plan
- Kids playing/ physical activity / good exercise
- Something the kids would like
- Could be at end of Derry Station Heritage Park
- Looks like fun

What I **don't** like in this picture:

- Looks OK
- Nothing
- Danger of injury



What I like in this picture:

- Looks like fun
- Activity for children
- Something the kids would like
- Kids playing
- Amazing plan
- More outdoor activities for kids

What I **don't** like in this picture:

- Not sure of appeal
- Nothing
- Looks great



What I like in this picture:

- More outdoor fun
- Could be used as barrier wall against RR or senior housing
- Great exercise/ challenge to physical abilities
- Nice for kids
- Good exercise, but needs supervision

What I **don't** like in this picture:

- Does not show soft landing surfaces
- Too dangerous

DERRY STATION HERITAGE PARK & TRAIL LINKAGES ■ CHARACTER PREFERENCE SURVEY SUMMARY



What I like in this picture:

- Pavilion for multi use
- Places for picnicking
- Beautiful
- Facility for family gatherings, social events, meetings
- I always need something for outdoor summer birthday parties
- Relaxing fellowship outdoors
- Good idea for this park
- Picnic shelter is a good idea if it can be kept intact from vandals

What I **don't** like in this picture:

- Noise would be a problem from RR tracks
- OK



What I like in this picture:

- Good sign to keep people civilized
- Good to keep walkers & bikers separate
- Yes! Very necessary to lay down ground rules of trail etiquette
- Signs are necessary for safety & info.
- Functional, but not very creative

What I **don't** like in this picture:

- OK
- Nothing I don't like



What I like in this picture:

- Looks like high maintenance
- Obviously this is well-planned landscaping, also well maintained
- May be put in at Community Park where old bleachers were
- Erosion control – pretty, neat appearance
- Nice looking, pleasing to the eyes, relaxing
- Natural noise barrier
- Artificial landscape – at least it isn't concrete

What I **don't** like in this picture:

- Doesn't use natural plants

DERRY STATION HERITAGE PARK & TRAIL LINKAGES ■ CHARACTER PREFERENCE SURVEY SUMMARY



What I like in this picture:

- Looks horrible
- More attractive than chain link
- Safe parking for cars
- Not sure what it is

What I **don't** like in this picture:

- A prison?
- Too city looking
- Ugly
- Don't like fence
- Ugly view, will rust with age
- Needs softening with plantings



What I like in this picture:

- Open space near a city
- Flowers
- Combination of natural & man-made structures
- Wildflowers
- Natural beauty
- Field like this off Rt 982 near Rt 30 – looks nice

What I **don't** like in this picture:

- OK, looks good
- Looks unkempt
- Nothing



What I like in this picture:

- I like community garden idea
- Kids being creative & involved & learning
- What a good idea!
- People doing things outdoors

What I **don't** like in this picture:

- The painting doesn't get it
- Graffiti on building in background

DERRY STATION HERITAGE PARK & TRAIL LINKAGES ■ CHARACTER PREFERENCE SURVEY SUMMARY



visual barrier - fence/road sign art

What I like in this picture:

- Yuck
- Fun community project
- Kids involvement

What I **don't** like in this picture:

- Looks like an inner city slum
- Blocks out all view of trains
- Looks too junky
- Just plain ugly – let nature be the scene
- Perhaps these signs were stolen
- Sloppy, looks thrown together



information kiosk - bike oriented

What I like in this picture:

- I like this – looks railroad
- Child safe reading directions
- Nice looking, weather protected sign
- To be put at the entrance to the park
- Nice setting, information board
- Information kiosk – may be necessary to guide people & to post rules/regulations

What I **don't** like in this picture:

- OK, looks good



bike rack

What I like in this picture:

- Good to have bicycle racks
- Must have
- Like the idea

What I **don't** like in this picture:

- OK
- Too city looking
- Don't know what this is supposed to be
- Like to see a small bike center inviting bikers

DERRY STATION HERITAGE PARK & TRAIL LINKAGES ■ CHARACTER PREFERENCE SURVEY SUMMARY



wall mural

What I like in this picture:

- I love murals – this one looks great
- Wonderful use of space
- Serene looking
- Covers up an ugly wall

What I **don't** like in this picture:

- Wouldn't stand up to time and weather
- I think it might promote someone into spray painting graffiti
- OK, but would it last?



wall mural

What I like in this picture:

- Yuck!
- Looks creative to me
- This is nice too

What I **don't** like in this picture:

- Ugly – looks like a bunch of graffiti
- Might promote someone into spray painting graffiti
- Junky
- Wouldn't stand up to time and weather



wall mural

What I like in this picture:

- No opinion
- Creativity
- Colorful
- Stimulating
- Energetic

What I **don't** like in this picture:

- Nothing
- Over time it will wear and look ugly
- Same as other pictures like this
- Looks horrible – ugly wall

DERRY STATION HERITAGE PARK & TRAIL LINKAGES ■ CHARACTER PREFERENCE SURVEY SUMMARY



What I like in this picture:

- Looks amateurish
- Sculptural quality using common elements – artistic approach to tree protection
- Nice arrangement – also creative with use of pots and firewood
- OK

What I **don't** like in this picture:

- Ugly
- Looks like something thrown together without much thought
- Should have planted flowers around the tree
- Need maintenance
- Don't like



What I like in this picture:

- What happens to this in winter?
- Good place for children
- Needed in park
- Appropriate for exercise
- Kids doing things outdoors

What I **don't** like in this picture:

- Wonder if people will lose it
- Just don't like the looks of it
- OK



What I like in this picture:

- Great idea, but...
- It's ok
- More low-tech, unobtrusive approach to exercise
- Must have in park
- Informational sign
- Fitness trails are integral

What I **don't** like in this picture:

- Does it ever get used?
- Looks barren

DERRY STATION HERITAGE PARK & TRAIL LINKAGES ■ CHARACTER PREFERENCE SURVEY SUMMARY



What I like in this picture:

- Great idea
- Adults relaxing and enjoying themselves
- Getting together
- I REALLY like this because I've been there, done that
- Resting in between bike riding – great
- Good for resting and visiting, fellowship
- Nothing

What I **don't** like in this picture:

- Nothing
- Could be anywhere!



What I like in this picture:

- Nice garden
- Nice, but might be a little too crowded for growth
- Serene, pretty
- Looks like a place I'd like to walk or sit
- At first glance it looks restrictive like a fortress, but is really a hidden, contemplative place
- Beautiful trail

What I **don't** like in this picture:

- Are they native plants?
- Rocks on top of the wall – make it so people can sit on it



What I like in this picture:

- Is this harmed by winter weather?
- Activity & exercise
- Need
- I like the exercise opportunity, but...
- Neat idea
- Kids outdoors

What I **don't** like in this picture:

- Will anyone use it?
- Go to a gym if you need this
- Too urban

DERRY STATION HERITAGE PARK & TRAIL LINKAGES ■ CHARACTER PREFERENCE SURVEY SUMMARY



What I like in this picture:

- Nothing
- I think this would be a great tourist attraction – attract families to move here
- Could be fun for kids
- Nice place to cool-off, relax
- Refreshing, looks like fun
- If it can be done, put it in
- Wonderful water activity
- Great idea

What I **don't** like in this picture:

- Too urban
- We have a swimming pool
- Could be dangerous
- Potential liability



What I like in this picture:

- Don't know what it is
- Looks like a fun maze
- Nothing

What I **don't** like in this picture:

- Too jarring to the eye (all those lines)
- Don't care for the lines on the ground – too much stuff
- General appearance
- Way too urban



What I like in this picture:

- Nice historical interpretive feature
- One of our assets, small museum
- Railroad relics
- Well kept memories of the past
- Greatly underutilized

What I **don't** like in this picture:

- OK
- It's not kept up, run down, rusty
- Not used enough/only open once/year
- Not handicap accessible
- No restrooms
- Why have them if no one is going to care for them – they're falling apart
- Lack of landscaping
- Need more cars/shops/coffee or restaurant
- Improvements to surrounding area could add to idea

DERRY STATION HERITAGE PARK & TRAIL LINKAGES ■ CHARACTER PREFERENCE SURVEY SUMMARY



What I like in this picture:

- Expensive?
- Adds to historical character
- Great fun for children
- Railroad theme invites kids to 'climb aboard'
- Fantastic idea to promote the RR heritage of area
- Looks like kids could have fun here

What I **don't** like in this picture:

- Too much pavement
- Expensive
- An amusement park



What I like in this picture:

- Looks OK, helps people learn about local history
- Interprets an historical event
- Explanatory monuments are good for everyone
- Nice

What I **don't** like in this picture:

- Might be subject to vandalism
- The rock is a bit overwhelming



printed on recycled paper



pennsylvania environmental council

22 terminal way • pittsburgh, pa 15219
www.pecpa.org